

85°35'0"E

85°36'0"E

85°37'0"E

20°16'0"N

20°17'0"N

20°16'0"N

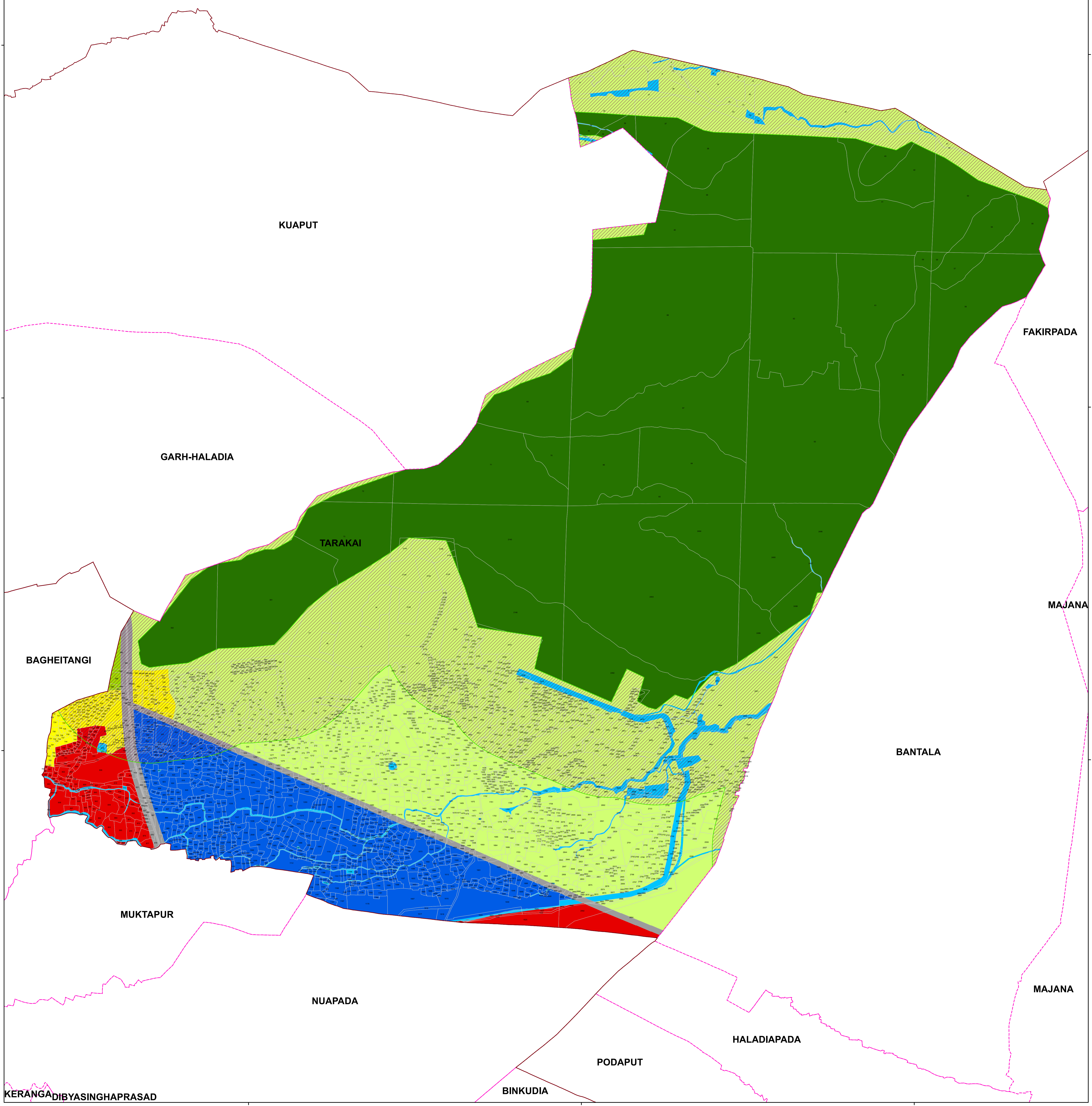
20°16'0"N

20°16'0"N

20°17'0"N

20°16'0"N

20°16'0"N



GIS BASED COMPREHENSIVE DEVELOPMENT PLAN FOR EXTENDED AREA OF BHUBANESWAR DEVELOPMENT AUTHORITY (BDA) - 2040

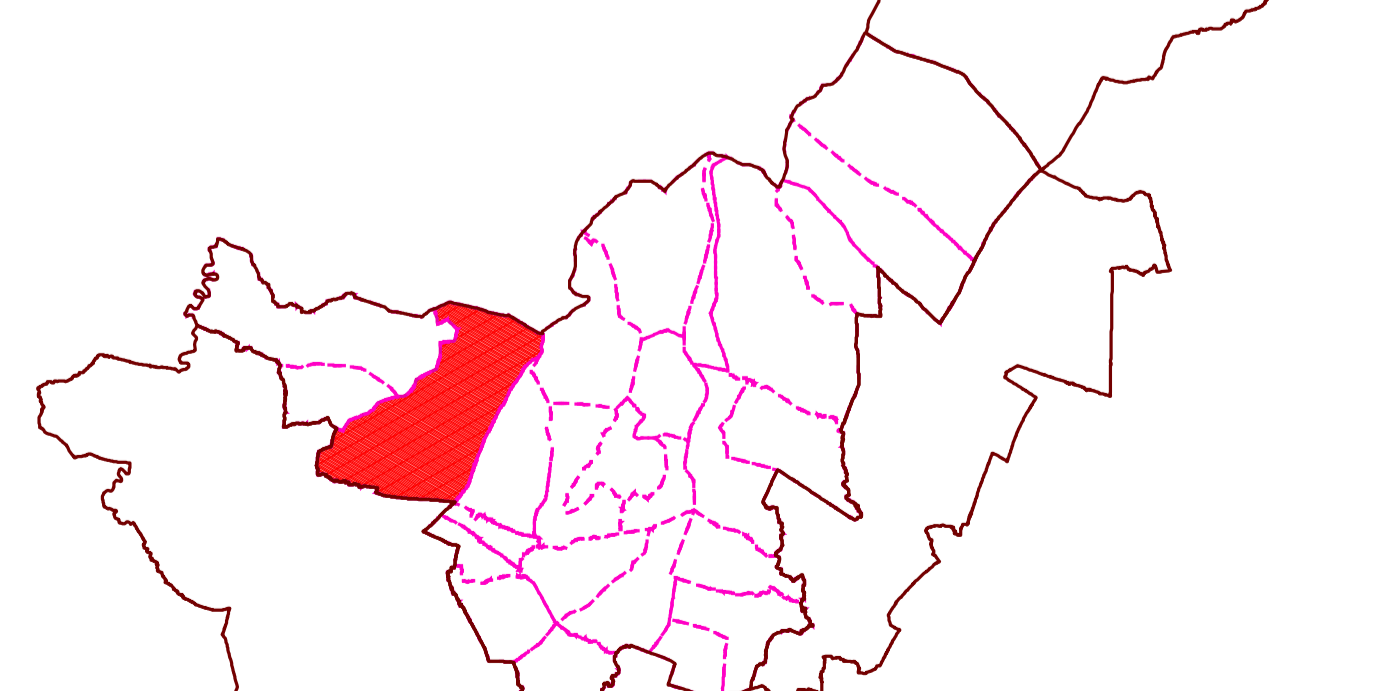
MAP NO: C2 / 26

DRAFT LAND USE MAP

LEGEND

KEY MAP: ZONE IN EXTENDED AREA

KEY MAP: VILLAGE IN CHANDAKA-I ZONE

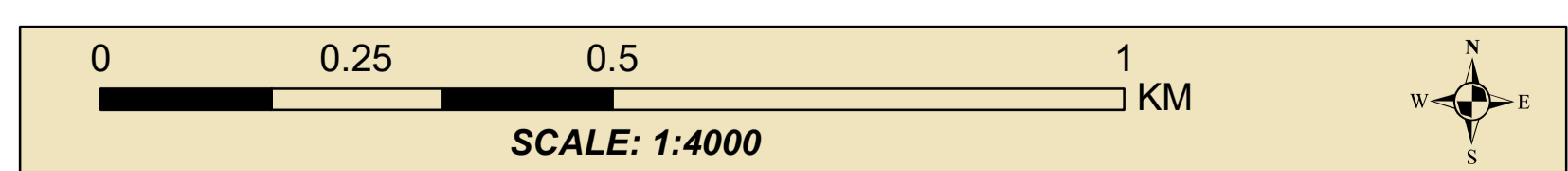


ZONE : CHANDAKA-I

VILLAGE / MOUZA : TARAKAI

- ZONE BOUNDARY
 - VILLAGE BOUNDARY
 - PLOT BOUNDARY
- LANDUSE**
- R RESIDENTIAL
 - C-1 RETAIL COMMERCIAL & BUSINESS
 - WHOLESALE COMMERCIAL
 - OS OPEN SPACE
 - U UTILITY & SERVICES
 - I INDUSTRIAL
 - PS PUBLIC & SEMI PUBLIC
 - M MONUMENTS
 - W WATER BODIES
 - ES ENVIRONMENTALLY SENSITIVE ZONE
- AGRICULTURAL & FOREST USE ZONE**
- A-1 AGRICULTURE
 - A-2 FOREST
- TRANSPORTATION USE ZONE**
- T-1 ROADS
 - RAILWAYS
 - BUS DEPOTS/TRUCK TERMINALS
 - M-R REGULATED ZONE
 - F-B FOREST BUFFER

NOTES:



BHUBANESWAR DEVELOPMENT AUTHORITY (BDA)
AKASH SHOVA BUILDING, SACHIVALAYA MARG, BHUBANESWAR-751001

ALL INDIA INSTITUTE OF LOCAL-SELF GOVERNMENT (AIILSG)
PROJECT OFFICE: SYED MANZIL, ACHARYAVIHAR SQUARE, BHUBANESWAR-751022
CONSULTANT: *Shashi Kant Pandey*
(DR. SHASHIKANT PANDEY)

