

GIS BASED COMPREHENSIVE DEVELOPMENT PLAN FOR EXTENDED AREA OF BHUBANESWAR DEVELOPMENT AUTHORITY (BDA) - 2040

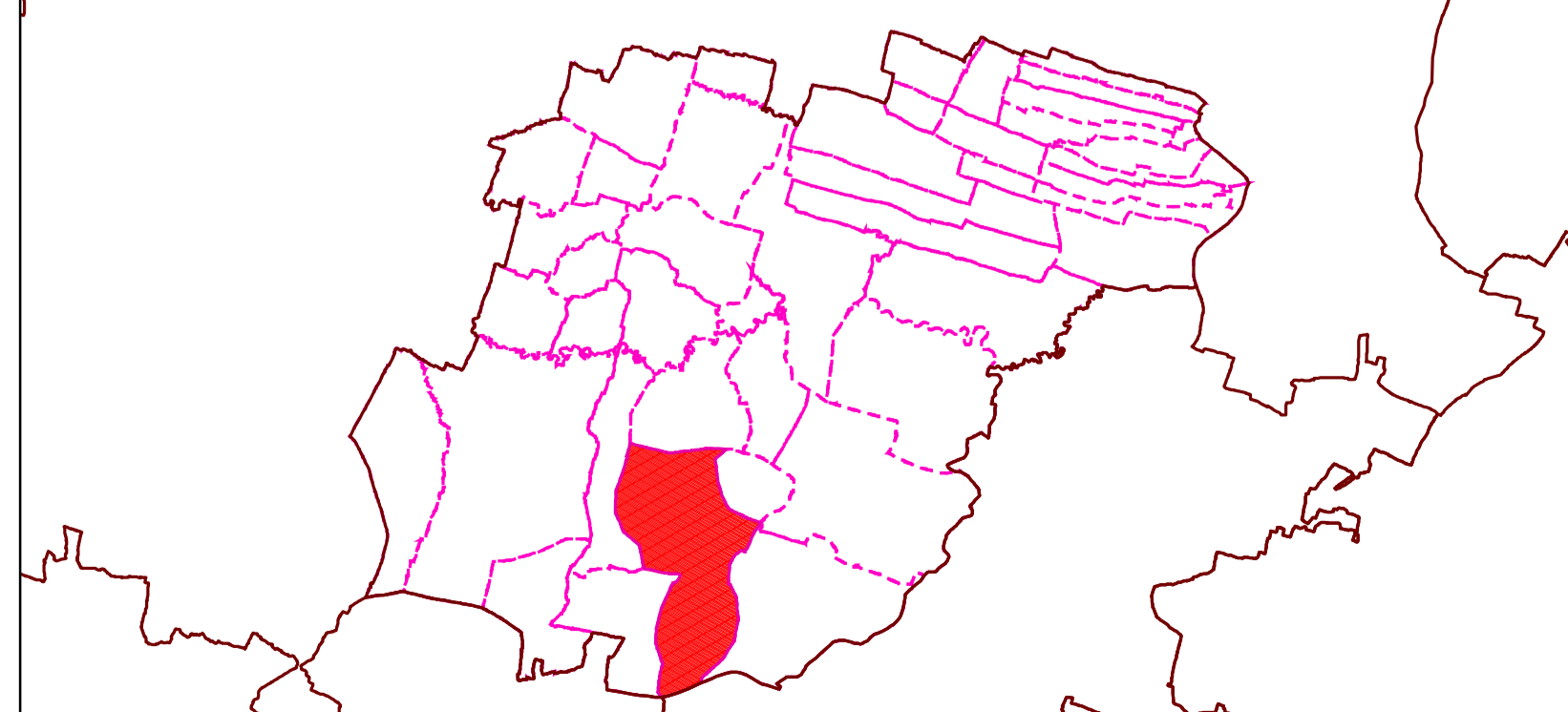
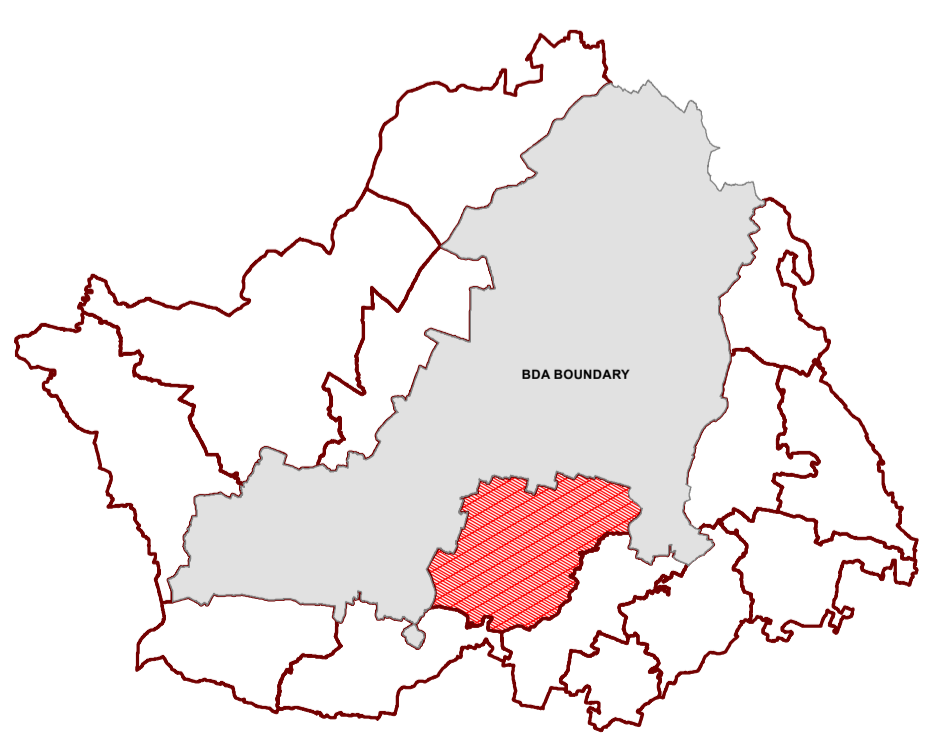
MAP NO: B3 / 32

DRAFT LAND USE MAP

LEGEND

KEY MAP: ZONE IN EXTENDED AREA

KEY MAP: VILLAGE IN PADANSAHI ZONE

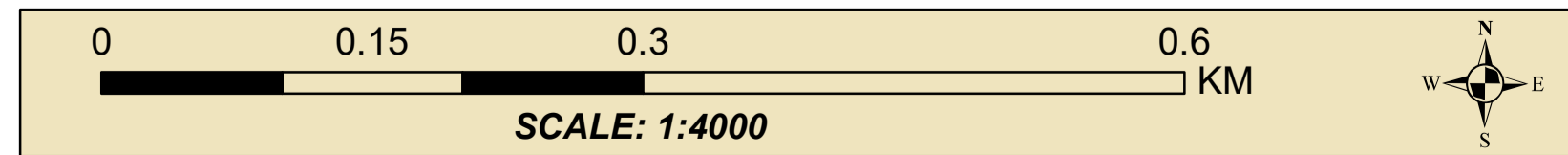


ZONE : PADANSAHI

VILLAGE / MOUZA : NIZIGADA-KURUKHI

- | | | |
|-----------------------------------|----------------------------------|---------------|
| ZONE BOUNDARY | VILLAGE BOUNDARY | PLOT BOUNDARY |
| LAND USE | | |
| R RESIDENTIAL | A-1 AGRICULTURE | |
| C-1 RETAIL COMMERCIAL & BUSINESS | A-2 FOREST | |
| C-2 WHOLESALE COMMERCIAL | TRANSPORTATION & ZONE | |
| OS OPEN SPACE | T-1 ROADS | |
| U UTILITY & SERVICES | RAILWAYS | |
| I INDUSTRIAL | BUS DEPOTS/TRUCK TERMINALS | |
| PS PUBLIC & SEMI PUBLIC | REGULATED ZONE | |
| M MONUMENTS | FOREST BUFFER | |
| W WATER BODIES | | |
| ES ENVIRONMENTALLY SENSITIVE ZONE | | |

NOTES:



BHUBANESWAR DEVELOPMENT AUTHORITY (BDA)
AKASH SHOVA BUILDING, SACHIVALAYA MARG, BHUBANESWAR-751001



ALL INDIA INSTITUTE OF LOCAL-SELF GOVERNMENT (AIILSG)
PROJECT OFFICE: SYED MANZIL, ACHARYAVIHAR SQUARE, BHUBANESWAR-751022

CONSULTANT: *Shashi Kant Pandey*
(DR. SHASHIKANT PANDEY)

