

GIS BASED COMPREHENSIVE DEVELOPMENT PLAN FOR EXTENDED AREA OF BHUBANESWAR DEVELOPMENT AUTHORITY (BDA) - 2040

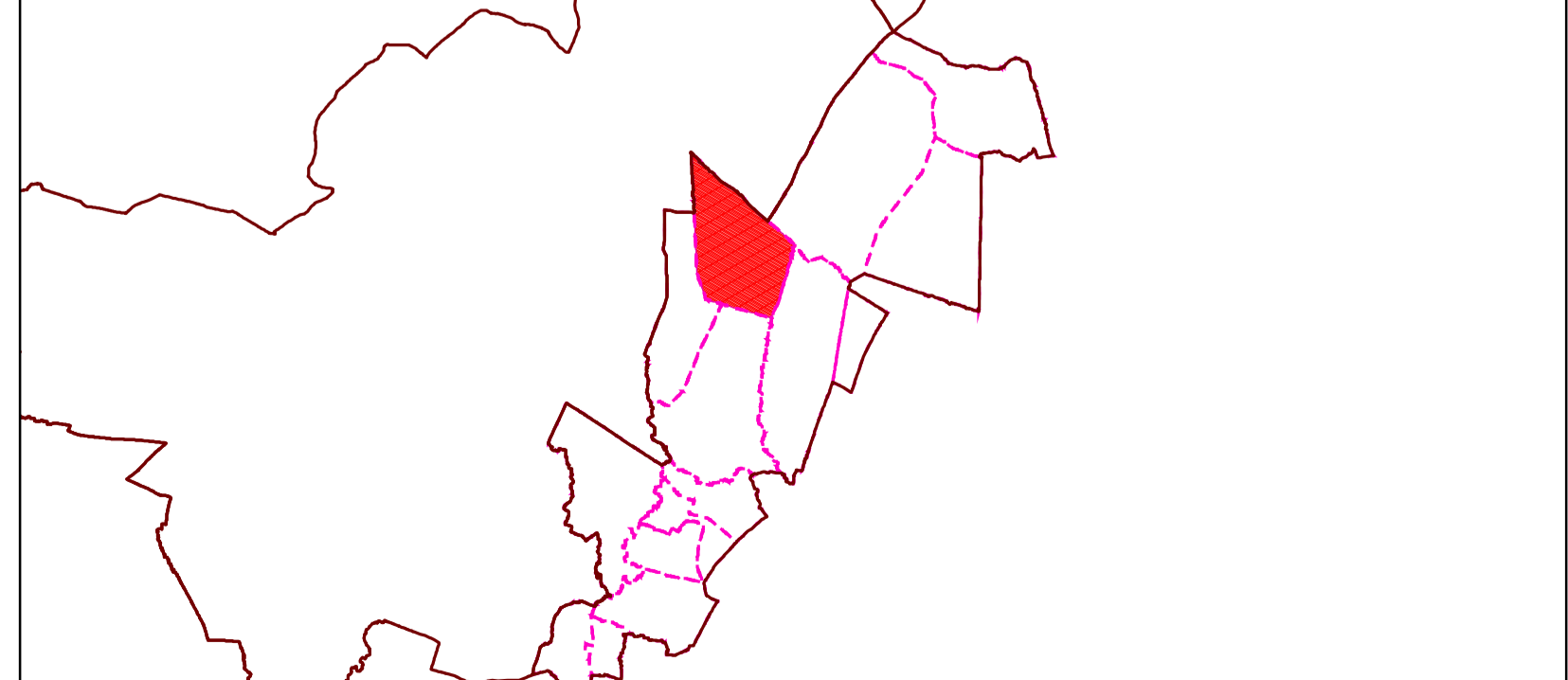
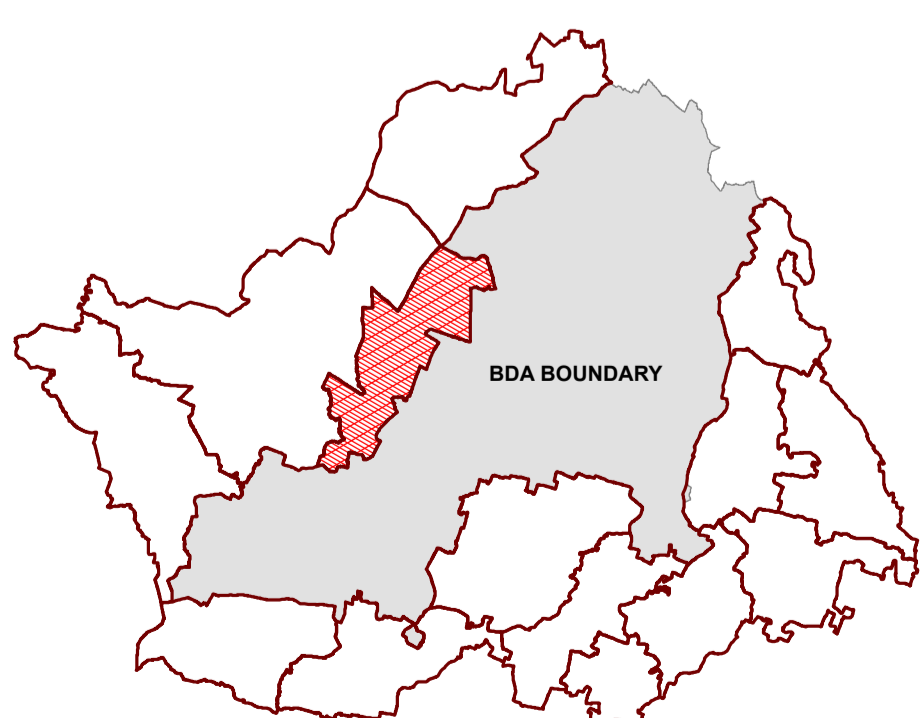
MAP NO: C3 / 09

DRAFT LAND USE MAP

LEGEND

KEY MAP: ZONE IN EXTENDED AREA

KEY MAP: VILLAGE IN GOTHAPATNA IT ZONE

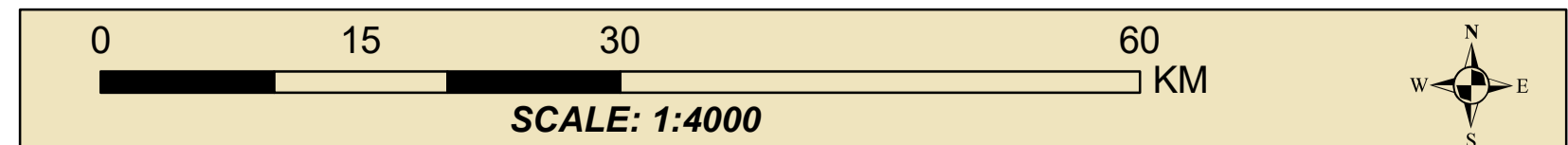


ZONE : GOTHAPATNA IT ZONE

VILLAGE / MOUZA : GIRINGAPUT

- | | | |
|-----------------------------------|----------------------------------|----------------------------|
| ZONE BOUNDARY | VILLAGE BOUNDARY | PLOT BOUNDARY |
| LANDUSE | | |
| R RESIDENTIAL | C-1 RETAIL COMMERCIAL & BUSINESS | A-1 AGRICULTURE |
| WHOLESALE COMMERCIAL | A-2 FOREST | T-1 ROADS |
| OS OPEN SPACE | I INDUSTRIAL | RAILWAYS |
| U UTILITY & SERVICES | PS PUBLIC & SEMI PUBLIC | BUS DEPOTS/TRUCK TERMINALS |
| M MONUMENTS | W WATER BODIES | M-R REGULATED ZONE |
| ES ENVIRONMENTALLY SENSITIVE ZONE | | F-B FOREST BUFFER |

NOTES:



BHUBANESWAR DEVELOPMENT AUTHORITY (BDA)
AKASH SHOVA BUILDING, SACHIVALAYA MARG, BHUBANESWAR-751001



ALL INDIA INSTITUTE OF LOCAL-SELF GOVERNMENT (AIILSG)
PROJECT OFFICE: SYED MANZIL, ACHARYAVIHAR SQUARE, BHUBANESWAR-751022

CONSULTANT:

Shashi Kant Pandey
(DR. SHASHIKANT PANDEY)

