

GIS BASED COMPREHENSIVE DEVELOPMENT PLAN FOR EXTENDED AREA OF BHUBANESWAR DEVELOPMENT AUTHORITY (BDA) - 2040

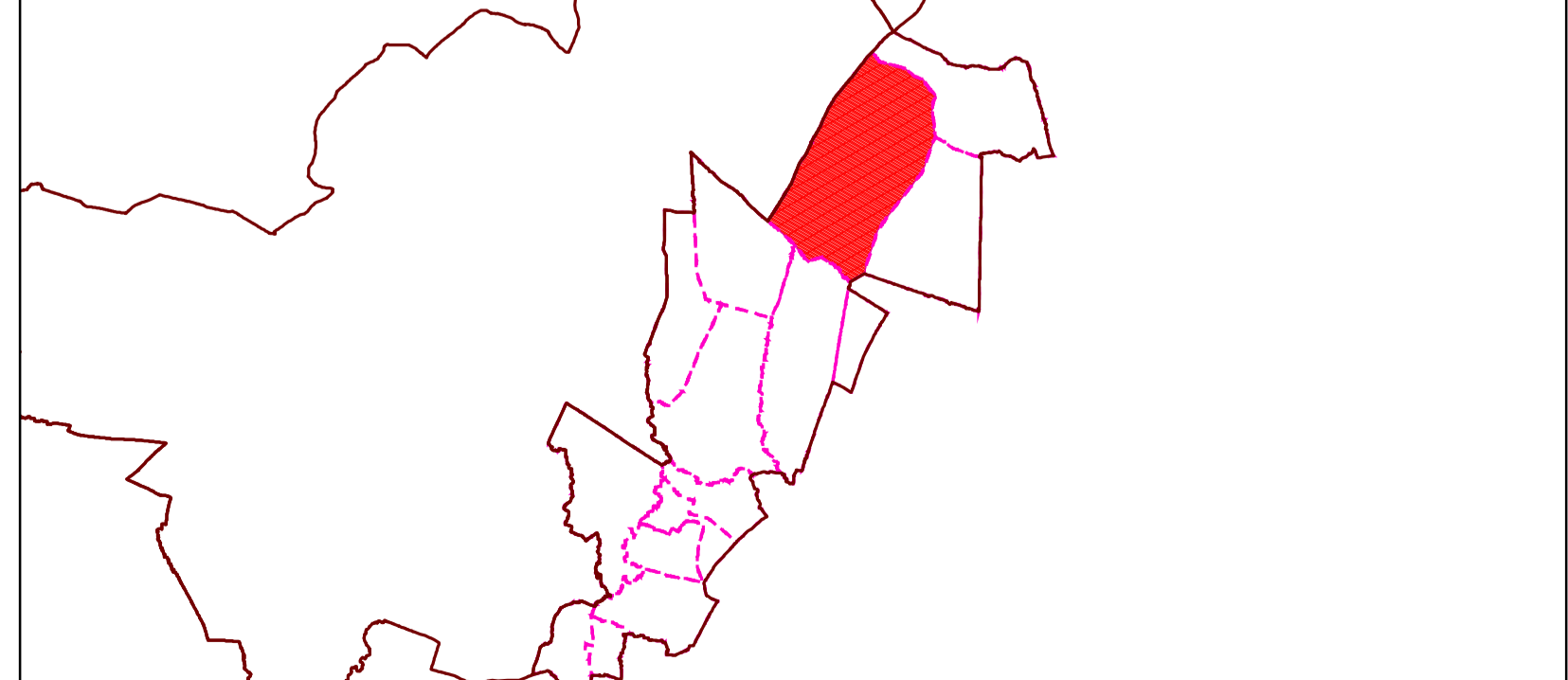
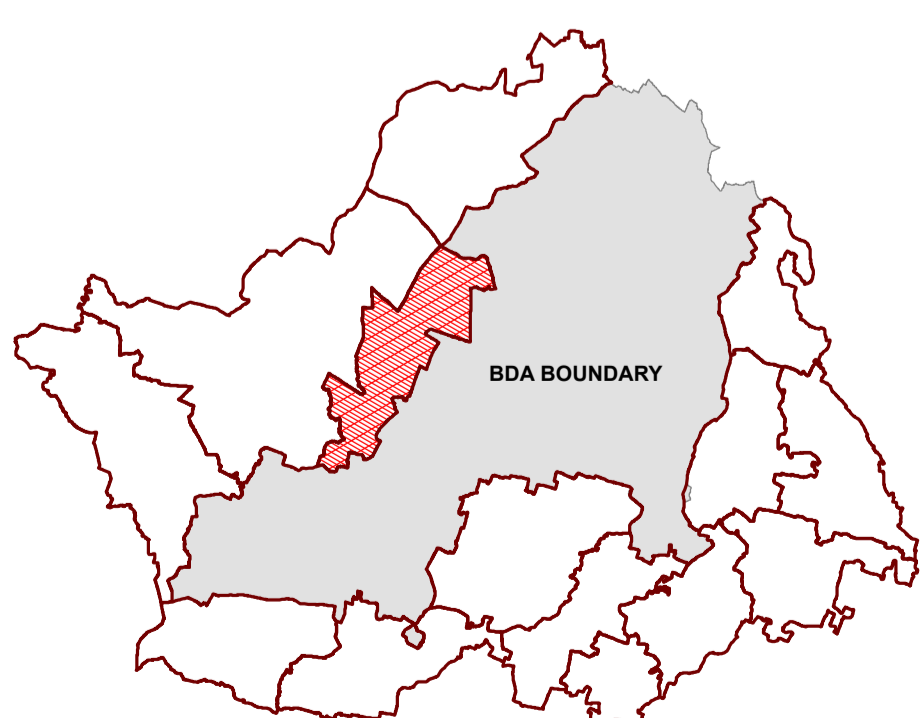
MAP NO: C3 / 08

DRAFT LAND USE MAP

LEGEND

KEY MAP: ZONE IN EXTENDED AREA

KEY MAP: VILLAGE IN GOTHAPATNA IT ZONE

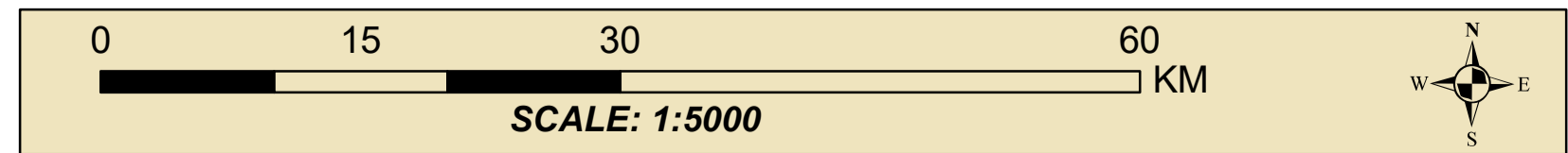


ZONE : GOTHAPATNA IT ZONE

VILLAGE / MOUZA : GHANGAPATNA

- ZONE BOUNDARY
 - VILLAGE BOUNDARY
 - PLOT BOUNDARY
- LANDUSE**
- R RESIDENTIAL
 - C-1 RETAIL COMMERCIAL & BUSINESS
 - WHOLESALE COMMERCIAL
 - OS OPEN SPACE
 - U UTILITY & SERVICES
 - I INDUSTRIAL
 - PS PUBLIC & SEMI PUBLIC
 - M MONUMENTS
 - W WATER BODIES
 - ES ENVIRONMENTALLY SENSITIVE ZONE
- AGRICULTURAL & FOREST USE ZONE**
- A-1 AGRICULTURE
 - A-2 FOREST
- TRANSPORTATION USE ZONE**
- T-1 ROADS
 - RAILWAYS
 - BUS DEPOTS/TRUCK TERMINALS
 - M-R REGULATED ZONE
 - F-B FOREST BUFFER

NOTES:



BHUBANESWAR DEVELOPMENT AUTHORITY (BDA)
AKASH SHOVA BUILDING, SACHIVALAYA MARG, BHUBANESWAR-751001



ALL INDIA INSTITUTE OF LOCAL-SELF GOVERNMENT (AIILSG)
PROJECT OFFICE: SYED MANZIL, ACHARYAVIHAR SQUARE, BHUBANESWAR-751022

CONSULTANT: *Shashi Kant Pandey*
(DR. SHASHIKANT PANDEY)

