

**GIS BASED COMPREHENSIVE DEVELOPMENT PLAN FOR EXTENDED AREA OF BHUBANESWAR DEVELOPMENT AUTHORITY (BDA) - 2040**

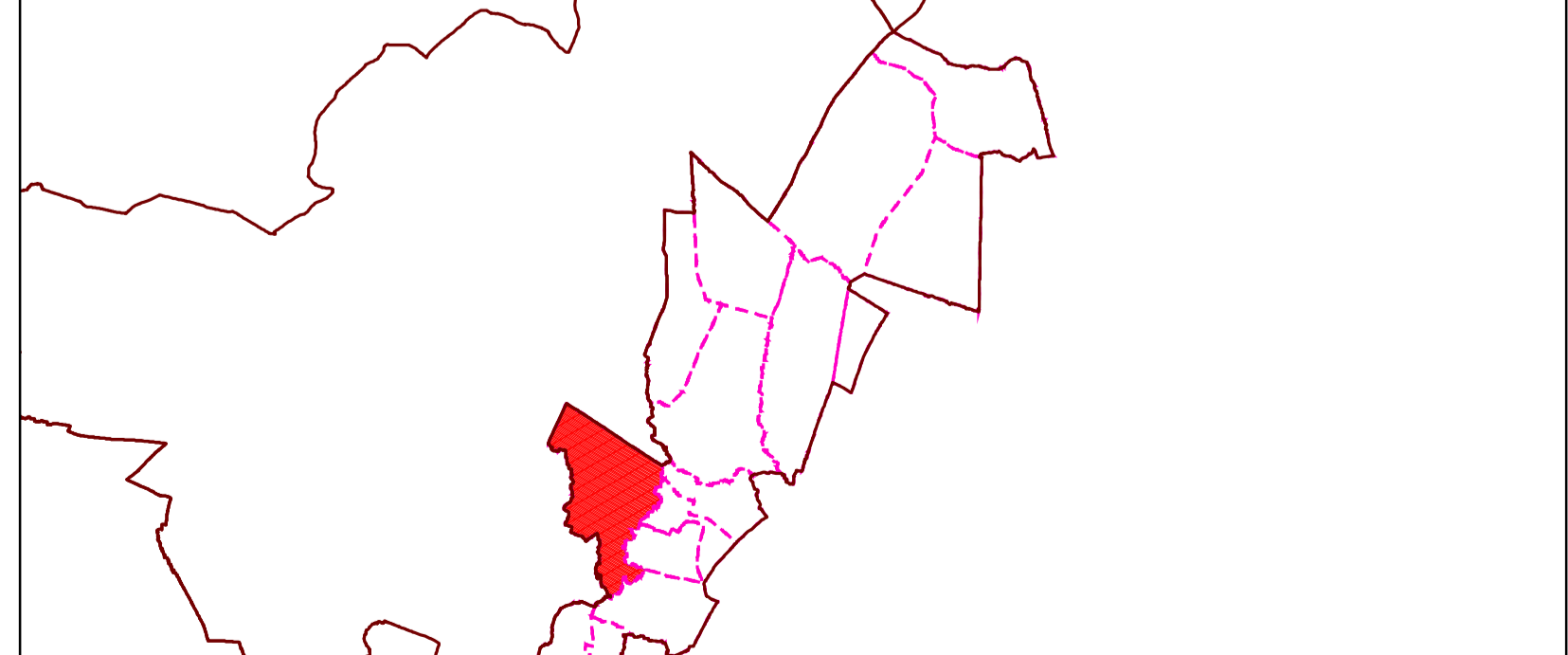
MAP NO: C3 / 02

DRAFT LAND USE MAP

LEGEND

KEY MAP: ZONE IN EXTENDED AREA

KEY MAP: VILLAGE IN GOTHAPATNA IT ZONE

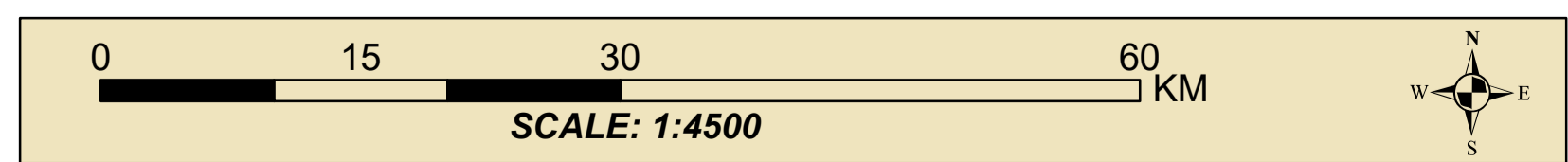


ZONE : GOTHAPATNA IT ZONE

VILLAGE / MOUZA : CHATABAR

ZONE BOUNDARY	VILLAGE BOUNDARY	PLOT BOUNDARY
<b>LANDUSE</b>		
R RESIDENTIAL	C-1 RETAIL COMMERCIAL & BUSINESS	A-1 AGRICULTURE
WHOLESALE COMMERCIAL	A-2 FOREST	T-1 ROADS
OS OPEN SPACE	U UTILITY & SERVICES	RAILWAYS
I INDUSTRIAL	PS PUBLIC & SEMI PUBLIC	BUS DEPOTS/TRUCK TERMINALS
M MONUMENTS	W WATER BODIES	REGULATED ZONE
ES ENVIRONMENTALLY SENSITIVE ZONE		FOREST BUFFER

NOTES:



**BHUBANESWAR DEVELOPMENT AUTHORITY (BDA)**  
AKASH SHOVA BUILDING, SACHIVALAYA MARG, BHUBANESWAR-751001



**ALL INDIA INSTITUTE OF LOCAL-SELF GOVERNMENT (AIIJSG)**

PROJECT OFFICE: SYED MANZIL, ACHARYAVIHAR SQUARE, BHUBANESWAR-751022

CONSULTANT: *Shashi Kant Pandey*  
(DR. SHASHIKANT PANDEY)

