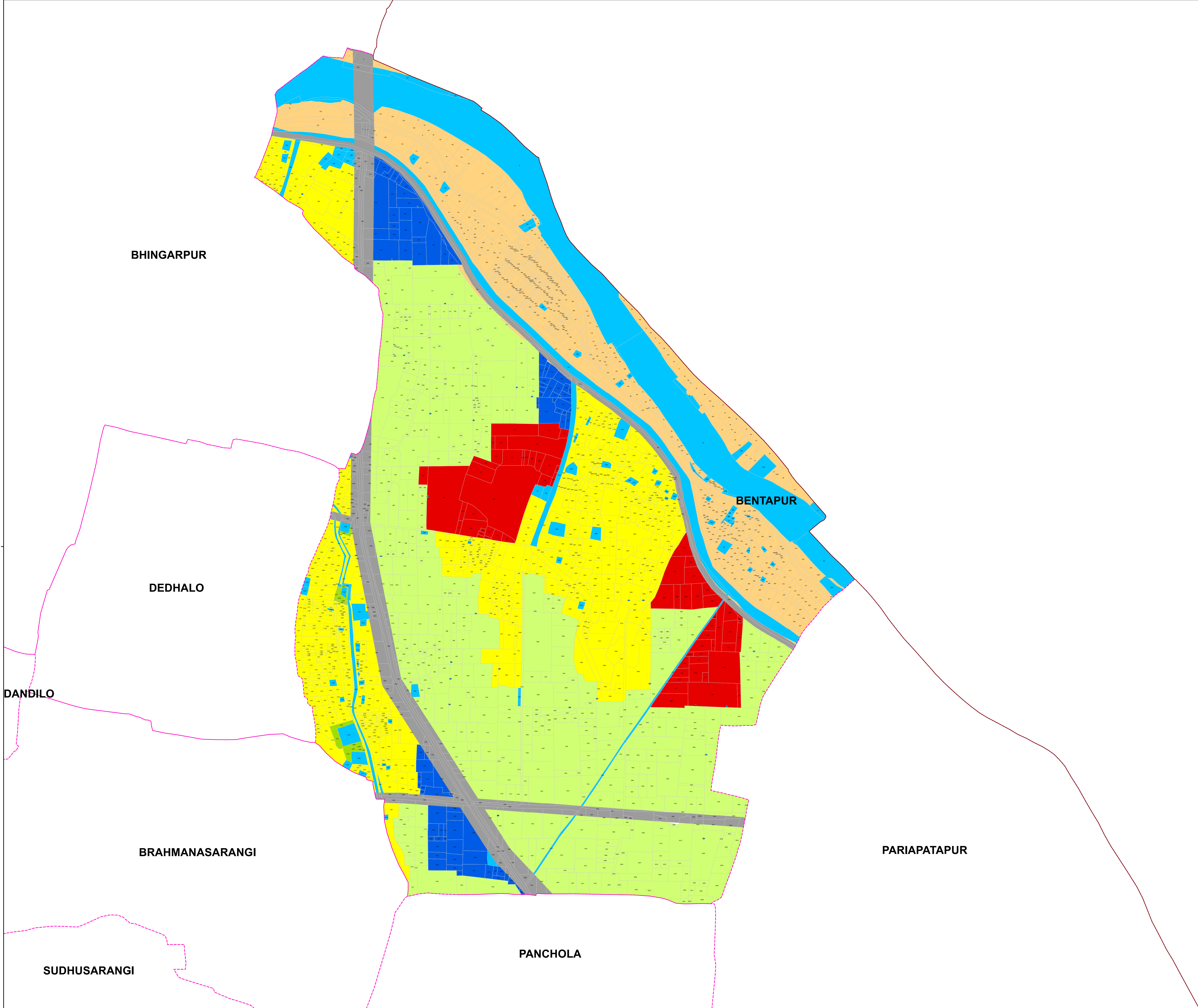


85°56'0"E

85°57'0"E

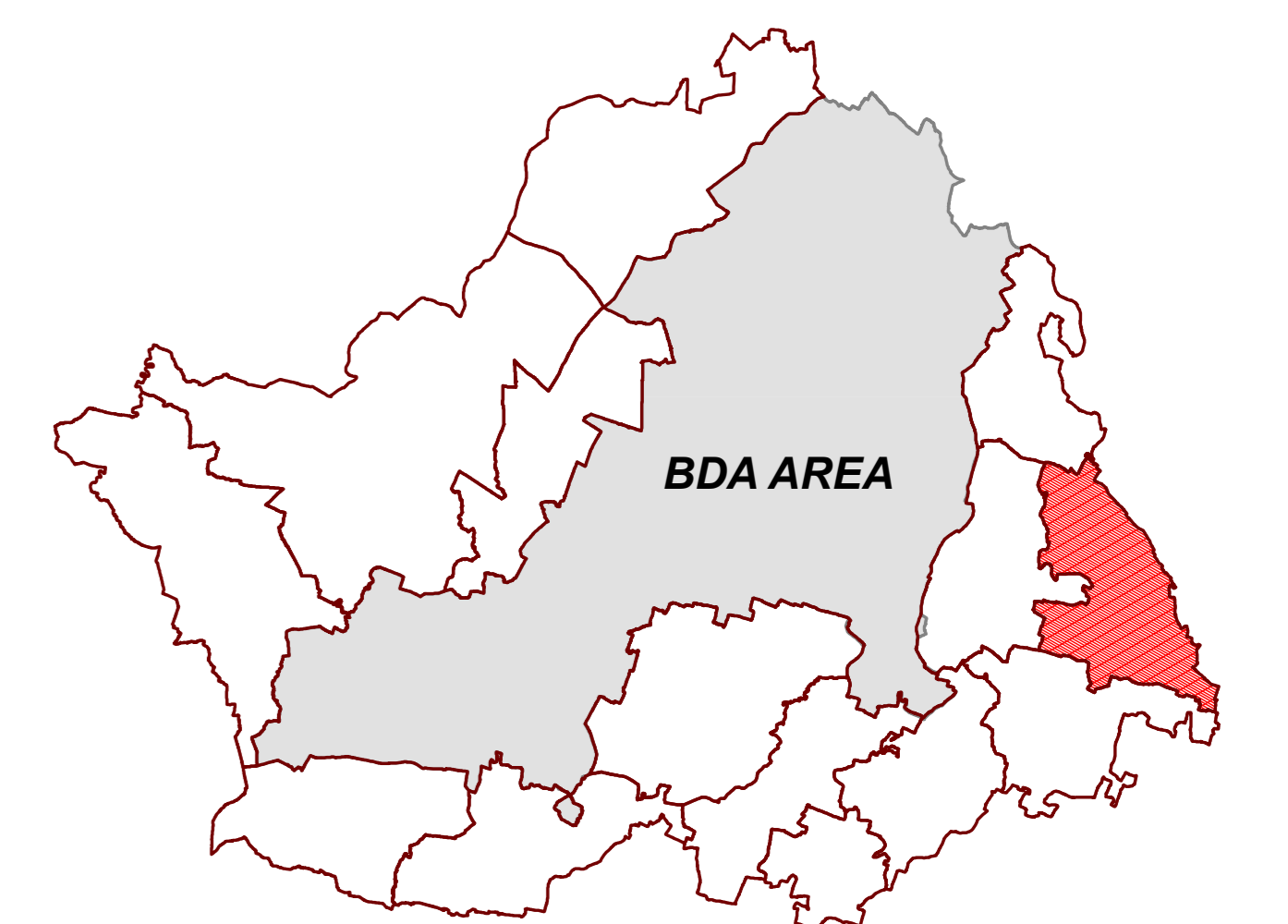
20°15'0"N

20°15'0"N



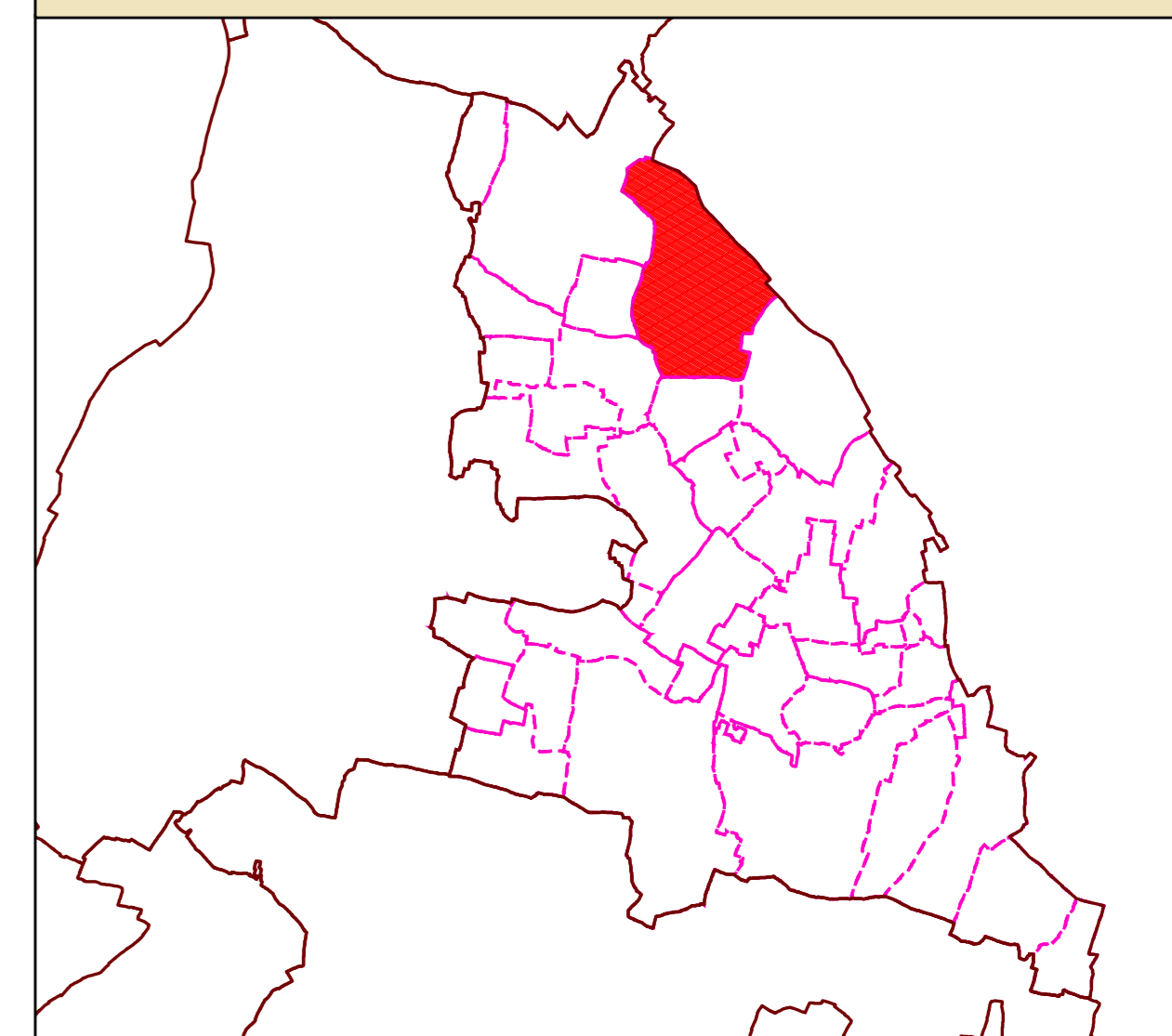
DRAFT LAND USE MAP

KEY MAP: ZONE OF EXTENDED AREA



ZONE : BALIPATNA

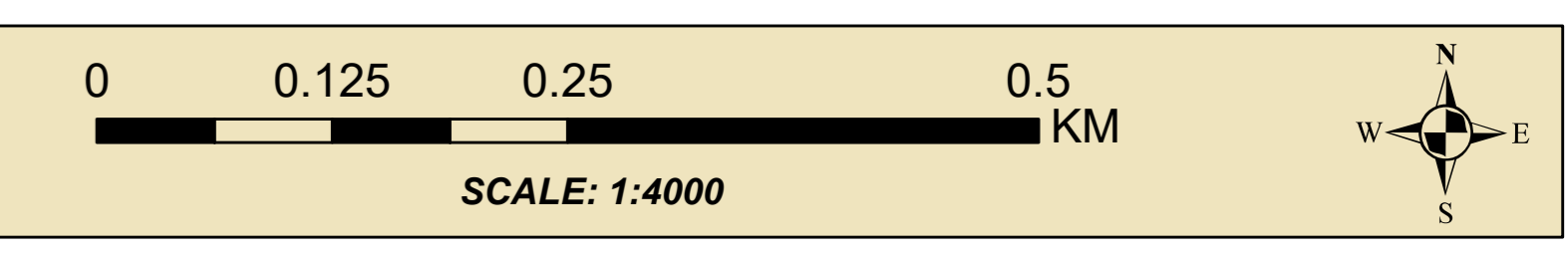
KEY MAP: VILLAGE IN BALIPATNA ZONE



VILLAGE / MOUZA : BENTAPUR

LEGEND

ZONE BOUNDARY	VILLAGE BOUNDARY	PLOT BOUNDARY
<b>LANDUSE</b>		
RESIDENTIAL	RETAIL COMMERCIAL & BUSINESS	WHOLESALE COMMERCIAL
OPEN SPACE	UTILITY & SERVICES	INDUSTRIAL
PUBLIC & SEMI PUBLIC	MONUMENTS	WATER BODIES
ENVIRONMENTALLY SENSITIVE ZONE		
<b>AGRICULTURAL &amp; FOREST USE ZONE</b>		
A-1 AGRICULTURE	FOREST	
<b>TRANSPORTATION USE ZONE</b>		
ROADS	RAILWAYS	BUS DEPOTS/TRUCK TERMINALS
REGULATED ZONE	FOREST BUFFER	



NOTES:

**BHUBANESWAR DEVELOPMENT AUTHORITY (BDA)**  
 AKASH SHOVA BUILDING, SACHIVALAYA MARG  
 BHUBANESWAR-751001



**ALL INDIA INSTITUTE OF LOCAL-SELF GOVERNMENT (AIIJSG)**

PROJECT OFFICE:  
 SYED MANZIL ACHARYAVIHAR SQUARE,  
 BHUBANESWAR-751022

CONSULTANT: *Shashi Kant Pandey*  
 (DR. SHASHIKANT PANDEY)



85°56'0"E

85°57'0"E