

## **Expression Of Interest**

**For**

**Deriving rates towards supply of SFRC Drain cover and Box drain  
of Dimensions standardized as per specifications within the limits  
of Bhubaneswar Municipal Corporation.**



**EOI No: 7774 /Date: 13.02.2024**

**BHUBANESWAR MUNICIPAL CORPORATION**

**BMC-ICOMC Tower, Unit-IX, Janpath  
Bhubaneswar-751007**

**[www.bmc.gov.in](http://www.bmc.gov.in)**

## Contents

1. SCHEDULE OF EVENTS:.....	3
1. OBJECTIVES.....	3
2. LETTER OF INVITATION .....	4
3. INTRODUCTION TO BIDDERS.....	5
1. Introduction: .....	5
2. Vision Of BMC: .....	5
3. Project Overview: .....	5
4. TERMS OF REFERENCE .....	6
1. Eligibility Criteria.....	6
2. Financial Criteria:.....	6
3. Scope of Work .....	6
5. TECHNICAL DETAILS .....	7
1. Technical Specifications .....	7
2. Drawings.....	7
6. GENERAL INFORMATION TO BIDDERS .....	16
1. Cost of Document.....	16
2. Earnest Money Deposit (EMD) .....	16
3. Subletting of Work:.....	16
4. Award of Work .....	16
5. Final decision making authority: .....	16
6. Arbitration:.....	16
7. Number of EOIs/ Single Application Eligibility: .....	16
8. EOI Submission Date:.....	17
9. Late Submission:.....	17
10. Modifications and Withdrawal of EOI: .....	17
11. Submission of EOI: Packing, Sealing and Marking of Proposals: .....	17
12. Jurisdiction .....	17
ANNEXURE- I .....	18
Annexure II.....	19
Annexure III.....	20
Annexure IV .....	21
Annexure V .....	22
Annexure VI .....	23

## 1. SCHEDULE OF EVENTS:

Sr. No.	Description	Date & Time
1	Issue of the EOI	13.02.2024
2	Availability of tender document for bidding in website: <a href="http://www.bmc.gov.in">www.bmc.gov.in</a>	15.02.2024 by 11:30 a.m.
6	Last date and time for submission of the proposal (by way of speed post/ Registered post/ Courier on or before the last date)	29.02.2024 by 05:30 p.m.
7	Date & Time of opening of the proposal	29.02.2024 by 6:00 p.m.
8	e-mail id for contact	<a href="mailto:pmubmc@gmail.com">pmubmc@gmail.com</a>

## 1. OBJECTIVES

Bhubaneswar Municipal Corporation (BMC) was constituted in the year 1948 as a Notified Area Council, then as a Municipality in the year 1979 and finally as a corporation in the year 1994. BMC has undertaken pioneering work in various fields and perceives its role as principal provider of various municipal services to provide a better quality of life to the residents of Bhubaneswar. An area of 186 sq. K.M. is being sectioned by BMC which is divided into 3 Zones and further subdivided into 67 wards.

- 1) All information contained in this EOI subsequently provided are in good faith. This EOI is not an agreement or an offer by BMC to the prospective applicants or any other person. The purpose of this EOI is to provide interested parties with information that may be useful to them in the formulation and submission of their applications pursuant to this EOI.
- 2) BMC accepts no liability of any nature whether resulting from negligence or otherwise however caused arising from reliance of any applicant upon the statements contained in this EOI.
- 3) BMC may in its absolute discretion, but without being under any obligation to do so, update, amend or supplement the information, assessment or assumption contained in this EOI, without assigning any reason or providing any notice and without accepting any liability for the same.
- 4) The issue of this EOI does not imply that BMC is bound to select an applicant or to appoint the selected applicant. BMC reserves the right to cancel this request for EOI and/ or invite afresh with or without amendments to this request for EOI, without liability or any obligation for such request for EOI and without assigning any reason. Information provided at this stage is merely indicative.

## 2. LETTER OF INVITATION

1.	The Commissioner, Bhubaneswar Municipal Corporation (BMC), Bhubaneswar, Government of Odisha invites technical and financial proposals from reputed implementing Agency/ Firms of Odisha for “ <b>Expression Of Interest For Deriving rates towards supply of SFRC Drain cover and Box drain of Dimensions standardized as per specifications within the limits of Bhubaneswar Municipal Corporation.</b> ” detailed in the scope of work in this EOI. The interested and eligible Agency/Firms with valid Registration Certificate as a Company, as detailed in EOI, may apply for the same in ON-LINE mode. (For details visit <a href="https://www.bmc.gov.in">https://www.bmc.gov.in</a> ).	
2.	Nature of Works	Expression Of Interest For Deriving rates towards supply of SFRC Drain cover and Box drain of Dimensions standardized as per specifications within the limits of Bhubaneswar Municipal Corporation.
3.	Non-refundable Document fee/ Tender (Bid) Cost	Non-refundable Tender Document cost in shape of Demand Draft from any scheduled commercial bank in favour of <b>Commissioner, Bhubaneswar Municipal Corporation</b> payable at <b>Bhubaneswar</b> for <b>Rs.4,720/-</b> (Rupee Four Thousand Seven Hundred Twenty Only) is to be furnished by the bidder along with the technical Bid. Bid without the requisite tender Document cost shall be treated as non-responsive and rejected. The mentioned Tender cost is inclusive of the GST.
4	Earnest Money Deposit	Not Applicable for the EOI
6	Eoi Type	Open Online
7	Submission of the Bid	Offline (as per the clause no- 6.8 and 6.11)
8	Joint Venture	Not Allowed
9	The bidders have to participate in OFF-LINE bidding only. Further details can be seen from <a href="http://www.bmc.gov.in">http://www.bmc.gov.in</a> . Any addendum /corrigendum / cancellation of tender can also be seen in the said websites. If any query, then contact E-mail ID –pmubmc@gmail.com	

By Order of Commissioner,

**Sd/-**

**Superintend Engineer  
Bhubaneswar Municipal Corporation**

### **3. INTRODUCTION TO BIDDERS**

#### **1. Introduction:**

The Bhubaneswar Municipal Corporation (BMC) invites expressions of interest from proficient and capable suppliers for the providing reinforced ferro concrete drain sections for designated work under BMC. This Expression of Interest (EOI) marks the initial step in identifying potential collaborators interested in partnering with BMC for specific municipal projects, focusing primarily on the installation of reinforced ferro concrete drain sections and related activities.

The EOI document includes comprehensive information about the project, the bidding process, proposal submission, qualification criteria, and financial proposal requirements. All proposals will undergo evaluation based on the technical expertise and financial capabilities of the applying companies. The EOI guidelines must be carefully followed, and applicants are required to sign the EOI form, annexures, specifications, bill of quantities, and rates, making necessary entries as required. Submissions will be accepted through the offline mode on the website - <https://www.bmc.gov.in>.

#### **2. Vision Of BMC:**

The vision of the Bhubaneswar Municipal Corporation (BMC) is rooted in the commitment to create a city that is not only functional and sustainable but also showcases reinforced ferro concrete drain sections as an integral component of a vibrant and inclusive urban space for its residents. BMC aspires to foster a community-centric environment where citizens enjoy a high quality of life, supported by robust infrastructure and efficient municipal services. The vision encompasses the development of smart, eco-friendly, and resilient urban landscapes that respond to the evolving needs of a growing population. BMC envisions a city that integrates innovative urban planning, advanced drainage solutions, and sustainable practices, ensuring a harmonious coexistence between urban development and environmental preservation. With a focus on citizen engagement and satisfaction, BMC aims to become a model municipality, leading the way in urban governance and service delivery for the benefit of all residents.

#### **3. Project Overview:**

BMC is actively seeking expressions of interest from dynamic and proficient suppliers capable of providing reinforced ferro concrete drain sections for specified work. The selected supplier will play a pivotal role in delivering high-quality ferro concrete drain sections as needed by BMC. The enrolment shall be initially for a period of 1 year from the date of signing the agreement. The bidder should provide the best market price in the attached format, complying with the technical specifications outlined for the reinforced ferro concrete drain sections, as per the attached drawing.

## **4. TERMS OF REFERENCE**

### **1. Eligibility Criteria**

- a. The bidder must be a legal Company/ Limited Liability Partnership/ Partnership Firm/ Proprietorship firm/ Partnership firm.
- b. The bidder should not be debarred/blacklisted by the Govt./any Govt. undertaking bodies and the bidder should not have any litigation in any of the Court(s)/Police Station in last five years from date of issue of this EOI.
- c. The bidder should have a minimum of 3 years of experience in manufacturing reinforced ferro concrete drain sections.
- d. The bidder should provide a list of similar projects completed in the last 3 years, including details of the client, project scope, and successful outcomes.
- e. Bidders must include in their bid document, valid and up-to-date test certificates for the materials used in the manufacturing of reinforced ferro concrete drain sections.
- f. The test certificates should be issued by recognized testing authorities and must confirm compliance with relevant industry standards and specifications.
- g. A copy of all work order/Experience certificate must be provided.

### **2. Financial Criteria:**

- a. The bidder should have a satisfactory financial track record and demonstrate financial stability.
- b. The bidder must have a minimum average annual turnover of 50 Lakhs (Rupees Five Lakhs only) during last three financial years i.e., FY 2020-21, 2021- 22 and 2022-23.
- c. Turnover certificate duly certified by CA and copies of ITR, Balance Sheet and Profit & Loss Account Statement to be submitted).
- d. The bidder should have Valid PAN Card
- e. The bidder should have a Valid GST Certificate.

### **3. Scope of Work**

The scope of work providing reinforced ferro concrete drain sections for work under Bhubaneswar Municipal Corporation (BMC) includes, but is not limited to, the following:

- a. The bidder should provide the best market price in the attached format, complying with the technical specifications outlined for the reinforced ferroconcrete drain sections, as per the attached drawing.
- b. Develop detailed designs and engineering plans for the reinforced ferro concrete drain sections, ensuring compliance with BMC standards and specifications.
- c. Provide technical drawings, material specifications, and any necessary calculations related to the structural integrity of the drain sections.
- d. Ensure that all materials meet the specified standards and provide test certificates for the materials as part of the bid document.
- e. Fabricate reinforced ferro concrete drain sections in accordance with the approved designs and specifications.
- f. To have fast track construction within stipulated time period.
- g. To maintain quality standard at site in unavoidable adverse conditions during drain construction.

- The scope of work may be subject to further clarification and refinement during the negotiation phase with the selected bidder.

The bidder should give the best market price in the attached format as per the technical specifications of the reinforced ferro concrete drain sections.

- a. Casting of Box Drain shall be made strictly using methodology adhering to the coal provisions of IS: 456:2000 from vertical cast method only.
- b. Aggregate Material used for casting shall be of M 40 Grade and should be prepared only through batching Plant setup.
- c. Daily Production capacity shall be minimum 200 mtr per day.
- d. OPC Cement only be used for casting of material.
- e. Any Primary TMT only to be used.
- f. Drawing shall be approved by BMC.
- g. Before starting the production QAP shall be approved by BMC.
- h. Precast section must be capable for Taking A/AA class load. Accordingly load test certificate shall be produced for each lot.
- i. TNT rebars only be used as primary reinforcement for casting of material.
- j. The casted section should be as per specifications & design detailing of approved drawings with proof checking by IIT/NIT etc.
- k. The reinforcement details and percentage of steel should be as per drawing enclosed.
- l. Production lot from each batch should be tested for its quality and report should be submitted to BMC.

**TYPICAL CROSS SECTION OF RCC SINGLE CELL BOX CULVERT**

**SECTION AT A-A**

**TOP PLAN**  
SHOWING POSITION OF LIFTING HOLES

**SCHEDULE OF DIMENSIONS :-**

S. NO.	R (mm)	H (mm)	T1 (mm)	T2 (mm)	T3 (mm)	H1 (mm)	H2 (mm)
1.	2000	1500	200	200	200	200	200

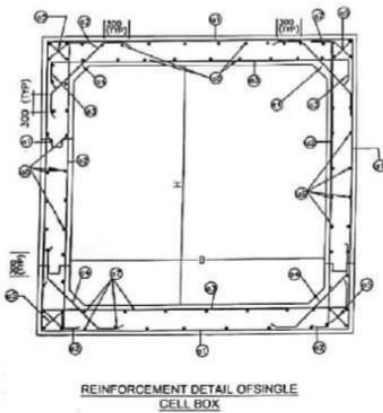
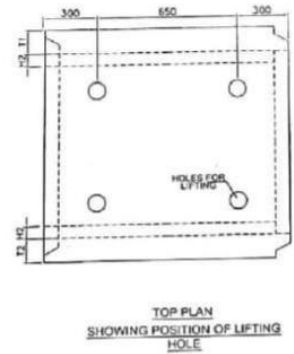
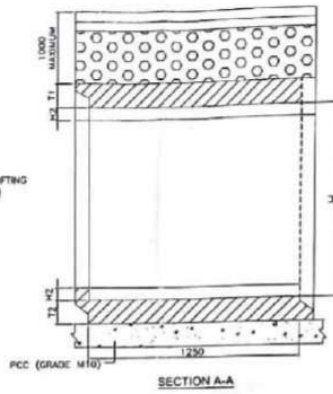
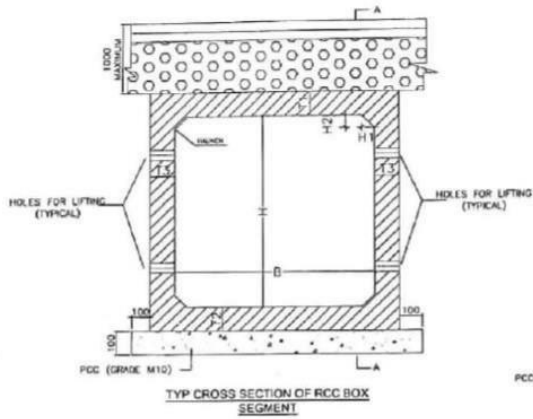
**SCHEDULE OF REINFORCEMENT :-**

BAR	BAR SIZE	BAR C/C	SPACING (mm)
A1	16	#16	120 C/C
A2	16	#16	120 C/C
A3	16	#16	120 C/C
A4	16	#16	120 C/C
A5	16	#16	120 C/C
A6	16	#16	120 C/C
A7	16	#16	120 C/C
A8	16	#16	120 C/C
A9	16	#16	120 C/C

**REINFORCEMENT DETAIL OF SINGLE CELL BOX**

**GENERAL NOTES:-**

- (1) ALL DIMENSIONS ARE IN MILLIMETERS.
- (2) THIS DRAWING SHALL BE READ IN CONJUNCTION WITH ALL OTHERS RELEVANT DRAWINGS.
- (3) REINFORCEMENT CLEAR COVER TO MAIN REINFORCEMENT SHALL BE 20MM.
- (4) MINIMUM LAP LENGTH OF REINFORCEMENT SHALL BE 40D AND WHERE D IS THE DIAMETER OF THE BAR NOT MORE THAN 50% SHALL BE LAPPED AT A SINGLE LOCATION.
- (5) LARK SHOULD GO AROUND MAIN BAR AND CONTINUE ALONG BARREL.
- (6) LARK SHOULD BE STARTED AT DISTANCE OF HALF THEIR SPACING FROM THE FACE OF SUPPORT.
- (7) MAXIMUM SIZE OF AGGREGATE TO BE USED IN RCC IS 20MM.
- (8) GRADE OF CONCRETE IS M-40.
- (9) ALL REINFORCEMENT SHALL BE HIGH YIELD STRENGTH DEFORMED BARS OF GRADE Fe 415 CONFORMING TO IS 1786-1983 WITH A MINIMUM YIELD STRENGTH OF 415 N/MM<sup>2</sup>.
- (10) JOINT OR LAPPING OF BARS SHALL BE SUITABLY STAGGERED AS PER CLAUSE 30.8.4 OF IS:1786-1983.
- (11) FULL SCALE ELEVATION FOR BARS SHALL BE LIMITED TO A PLAN PLATING ELEVATION TO THE DIMENSIONS SHOWN ON THE DRAWING SO AS TO GET CORRECT CLEARANCE BETWEEN DIFFERENT BARS AND THAT THE BARS SHALL BE BENT TO PROPER SHAPE.



SCHEDULE OF REINFORCEMENT

	BAR MARK	BAR SHAPE	BAR DIA (MM)	SPACING (MM)
FOR SINGLE CELL BOX CULVERT 1250 X 1250 (INTERNAL DIMENSION)	a1		8	100 C/C
	a2		8	100 C/C
	a3		10	100 C/C
	a4		8	100 C/C
	a5		8	4-NOS
	a6		8	165 C/C
	a7		8	165 C/C
	a8		8	165 C/C
	a9		8	165 C/C

SCHEDULE OF DIMENSIONS

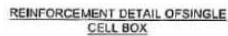
S.NO	B (mm)	H (mm)	T1 (mm)	T2 (mm)	T3 (mm)	H1 (mm)	H2 (mm)
1	1250	1250	100	100	100	100	100


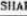







- NOTES :-
1. ALL DIMENSIONS ARE IN MILLIMETERS.
  2. THE BOXES SHALL BE MADE IN CONCRETE WITH ALL DIMENSIONS AS SHOWN.
  3. REINFORCEMENT SHALL BE AS PER SCHEDULE OF REINFORCEMENT.
  4. JOINTS OF REINFORCEMENT SHALL BE MADE AT 50% OF THE SPACING AND SHALL BE MADE AT 50% OF THE SPACING.
  5. JOINTS OF REINFORCEMENT SHALL BE MADE AT 50% OF THE SPACING AND SHALL BE MADE AT 50% OF THE SPACING.
  6. JOINTS OF REINFORCEMENT SHALL BE MADE AT 50% OF THE SPACING AND SHALL BE MADE AT 50% OF THE SPACING.
  7. JOINTS OF REINFORCEMENT SHALL BE MADE AT 50% OF THE SPACING AND SHALL BE MADE AT 50% OF THE SPACING.
  8. JOINTS OF REINFORCEMENT SHALL BE MADE AT 50% OF THE SPACING AND SHALL BE MADE AT 50% OF THE SPACING.
  9. JOINTS OF REINFORCEMENT SHALL BE MADE AT 50% OF THE SPACING AND SHALL BE MADE AT 50% OF THE SPACING.
  10. JOINTS OF REINFORCEMENT SHALL BE MADE AT 50% OF THE SPACING AND SHALL BE MADE AT 50% OF THE SPACING.



Dr. R. S. JANGID  
Professor  
Department of Civil Engineering  
L.T. Bombay, Powai, Mumbai-76



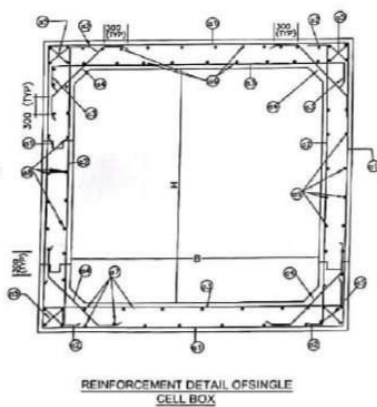
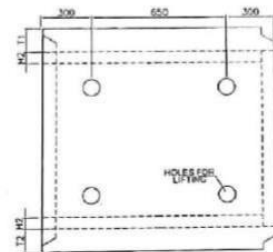
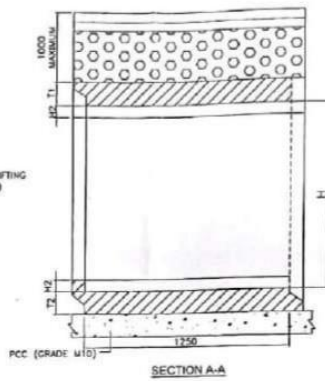
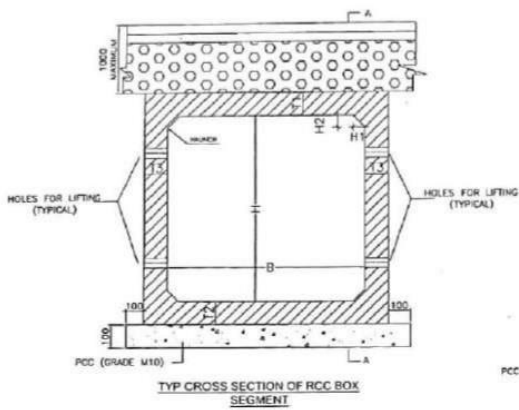


	BAR MARK	BAR SHAPE	BAR DIA (MM)	SPACING (MM)
FOR SINGLE CELL BOX CONVERTER 600 X 600 (INTERNAL DIMENSIONS)	a1		8	200 C/1
	a2		8	200 C/1
	a3		8	100 C/0
	a4		8	203 C/0
	a5		8	4-H05
	a6		8	250 C/0
	a7		8	250 C/0
	a8		5	250 C/0
	a9		5	250 C/0

S.NO	B (mm)	H (mm)	T1 (mm)	T2 (mm)	T3 (mm)	H1 (mm)	H2 (mm)
1	500	600	100	100	100	100	100

[illegible]

Dr. R. S. JANGID  
Professor  
Department of Civil Engineering  
I.I.T. Bombay, Powai, Mumbai-76



SCHEDULE OF REINFORCEMENT

BAR MARK	BAR SHAPE	BAR DIA (MM)	SPACING (MM)
a1		10	125 C/C
a2		8	125 C/C
a3		10	125 C/C
a4		8	105 C/C
a5		8	4-NOS
a6		8	125 C/C
a7		8	125 C/C
a8		8	125 C/C
a9		8	125 C/C

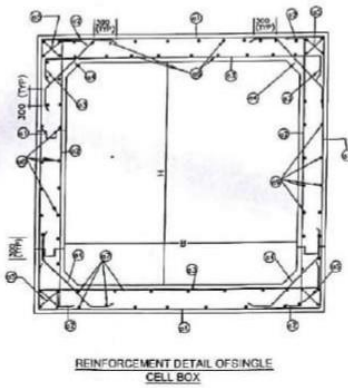
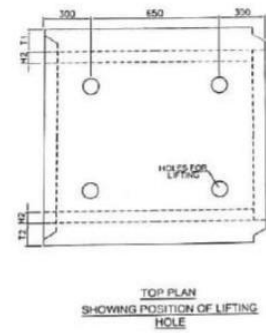
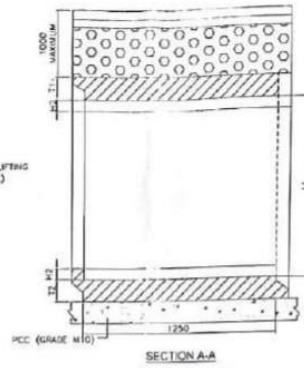
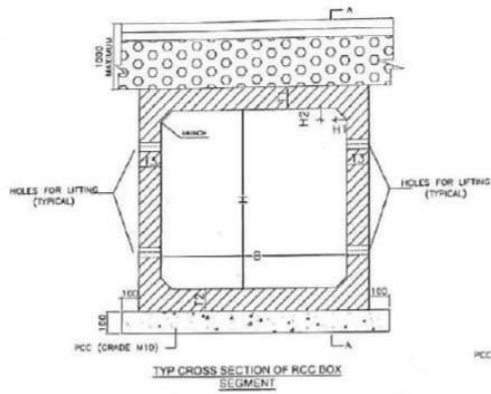
SCHEDULE OF DIMENSIONS

S NO	B (mm)	H (mm)	T1 (mm)	T2 (mm)	T3 (mm)	H1 (mm)	H2 (mm)
1	1500	1500	190	190	190	190	190

Dr. R. S. JANGID  
Professor  
Department of Civil Engineering  
I.I.T. Bombay, Powai, Mumbai-76



- NOTES :-
1. ALL DIMENSIONS ARE IN MILLIMETERS.
  2. THE BOXING SHALL BE MADE IN CONFORMANCE WITH ALL APPLICABLE STANDARDS.
  3. DIMENSIONS SHALL BE GIVEN TO THE CENTER OF GRAVITY OF THE BOX.
  4. DIMENSIONS ARE GIVEN TO THE CENTER OF GRAVITY OF THE BOX. THE CENTER OF GRAVITY SHALL BE LOCATED AT THE CENTER OF THE BOX.
  5. THE BOXING SHALL BE MADE IN CONFORMANCE WITH ALL APPLICABLE STANDARDS.
  6. THE BOXING SHALL BE MADE IN CONFORMANCE WITH ALL APPLICABLE STANDARDS.
  7. THE BOXING SHALL BE MADE IN CONFORMANCE WITH ALL APPLICABLE STANDARDS.
  8. THE BOXING SHALL BE MADE IN CONFORMANCE WITH ALL APPLICABLE STANDARDS.
  9. THE BOXING SHALL BE MADE IN CONFORMANCE WITH ALL APPLICABLE STANDARDS.
  10. THE BOXING SHALL BE MADE IN CONFORMANCE WITH ALL APPLICABLE STANDARDS.



SCHEDULE OF REINFORCEMENT

BAR MARK	BAR SHAPE	BAR DIA. (MM)	SPACING (MM)
a1		10	100 C/C
a2		8	100 C/C
a3		10	100 C/C
a4		8	100 C/C
a5		8	4-NOS
a6		8	100 C/C
a7		8	100 C/C
a8		8	100 C/C
a9		8	100 C/C

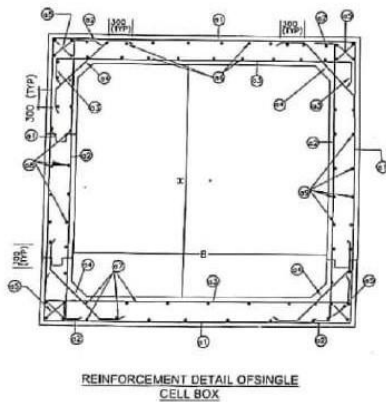
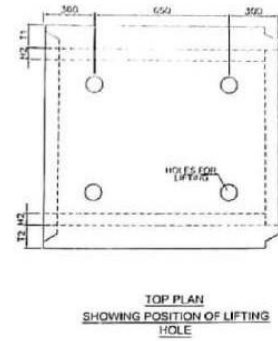
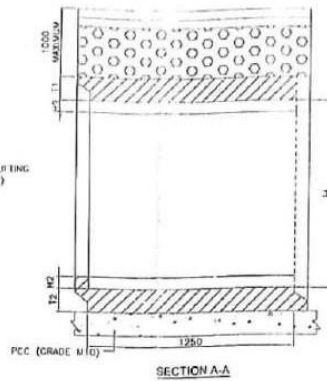
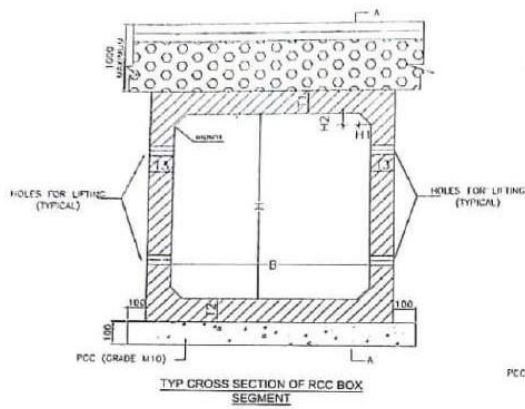
SCHEDULE OF DIMENSIONS

S.NO	B (mm)	H (mm)	T1 (mm)	T2 (mm)	T3 (mm)	H1 (mm)	H2 (mm)
1	2000	2000	240	240	240	200	200

Dr. R. S. JANGID  
Professor  
Department of Civil Engineering  
I.I.T. Bombay, Powai, Mumbai-76



- NOTES :-
1. ALL DIMENSIONS ARE IN MILLIMETERS.
  2. THE REINFORCEMENT SHALL BE PLACED IN ACCORDANCE WITH ALL INDIAN STANDARDS.
  3. REINFORCEMENT SHALL BE PLACED IN ACCORDANCE WITH ALL INDIAN STANDARDS.
  4. REINFORCEMENT SHALL BE PLACED IN ACCORDANCE WITH ALL INDIAN STANDARDS.
  5. REINFORCEMENT SHALL BE PLACED IN ACCORDANCE WITH ALL INDIAN STANDARDS.
  6. REINFORCEMENT SHALL BE PLACED IN ACCORDANCE WITH ALL INDIAN STANDARDS.
  7. REINFORCEMENT SHALL BE PLACED IN ACCORDANCE WITH ALL INDIAN STANDARDS.
  8. REINFORCEMENT SHALL BE PLACED IN ACCORDANCE WITH ALL INDIAN STANDARDS.
  9. REINFORCEMENT SHALL BE PLACED IN ACCORDANCE WITH ALL INDIAN STANDARDS.
  10. REINFORCEMENT SHALL BE PLACED IN ACCORDANCE WITH ALL INDIAN STANDARDS.



SCHEDULE OF REINFORCEMENT

BAR MARK	BAR SHAPE	BAR DIA (MM)	SPACING (MM)
a1		8	200 C/C
a2		8	200 C/C
a3		8	100 C/C
a4		8	200 C/C
a5		8	4-NOS
a6		8	250 C/C
a7		8	250 C/C
a8		8	250 C/C
a9		8	250 C/C

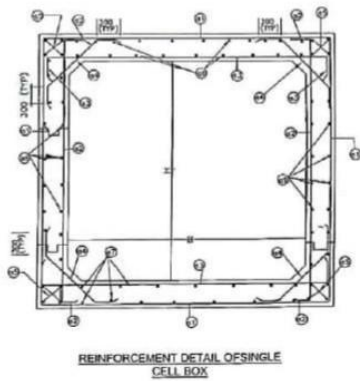
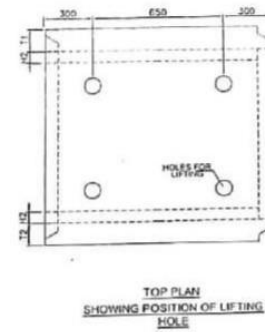
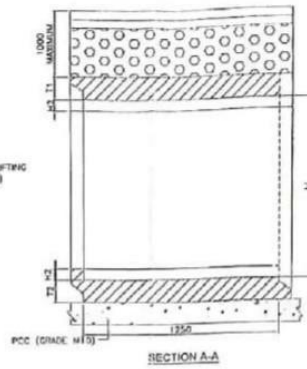
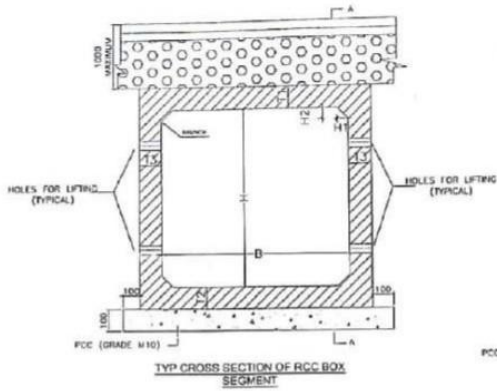
SCHEDULE OF DIMENSIONS

S.NO	B (mm)	H (mm)	T1 (mm)	T2 (mm)	T3 (mm)	H1 (mm)	H2 (mm)
1	600	600	100	100	100	100	100



Dr. R. S. JANGID  
Professor  
Department of Civil Engineering  
I.I.T. Bombay, Powai, Mumbai-76

- NOTES :-
1. ALL DIMENSIONS ARE IN MILLIMETERS.
  2. REINFORCEMENT SHALL BE PLACED IN CONCRETE WITH ALL PROPER SPACING.
  3. REINFORCEMENT SHALL BE PLACED IN CONCRETE WITH ALL PROPER SPACING.
  4. REINFORCEMENT SHALL BE PLACED IN CONCRETE WITH ALL PROPER SPACING.
  5. REINFORCEMENT SHALL BE PLACED IN CONCRETE WITH ALL PROPER SPACING.
  6. REINFORCEMENT SHALL BE PLACED IN CONCRETE WITH ALL PROPER SPACING.
  7. REINFORCEMENT SHALL BE PLACED IN CONCRETE WITH ALL PROPER SPACING.
  8. REINFORCEMENT SHALL BE PLACED IN CONCRETE WITH ALL PROPER SPACING.
  9. REINFORCEMENT SHALL BE PLACED IN CONCRETE WITH ALL PROPER SPACING.
  10. REINFORCEMENT SHALL BE PLACED IN CONCRETE WITH ALL PROPER SPACING.



SCHEDULE OF REINFORCEMENT

BAR MARK	BAR SHAPE	BAR DIA. (MM)	SPACING (MM)
a1		8	100 C/C
a2		8	100 C/C
a3		8	100 C/C
a4		8	100 C/C
a5		8	4-100S
a6		8	200 C/C
a7		8	200 C/C
a8		8	200 C/C
a9		8	200 C/C

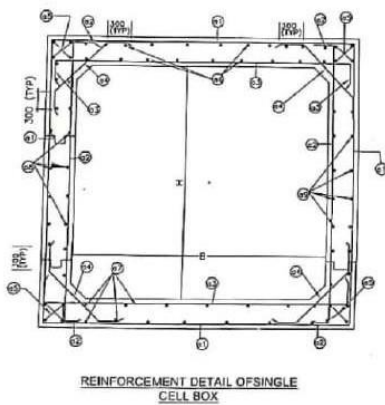
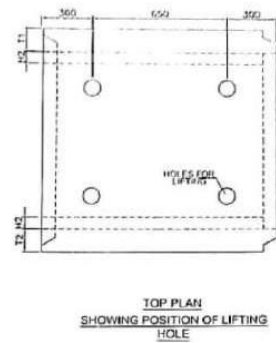
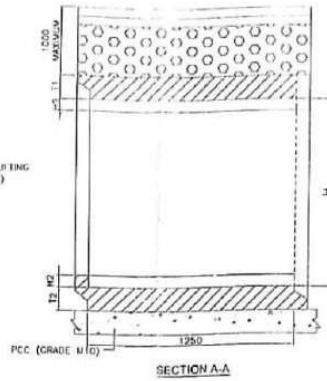
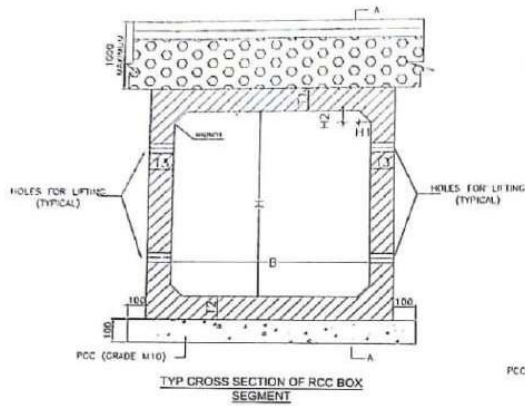
SCHEDULE OF DIMENSIONS

S.NO	B (mm)	H (mm)	T1 (mm)	T2 (mm)	T3 (mm)	H1 (mm)	H2 (mm)
1	1000	1000	125	125	125	125	125

Dr. R. S. JANGID  
Professor  
Department of Civil Engineering  
I.I.T. Bombay, Powai, Mumbai-76



- NOTES:
1. ALL DIMENSIONS ARE IN MILLIMETERS.
  2. REINFORCEMENT SHALL BE MADE IN CONFORMANCE WITH ALL APPLICABLE STANDARDS.
  3. APPROX. 10% OVERLAP SHALL BE MAINTAINED FOR ALL REINFORCEMENT BARS.
  4. APPROX. 10% OVERLAP OF REINFORCEMENT SHALL BE MAINTAINED FOR ALL REINFORCEMENT BARS.
  5. APPROX. 10% OVERLAP OF REINFORCEMENT SHALL BE MAINTAINED FOR ALL REINFORCEMENT BARS.
  6. APPROX. 10% OVERLAP OF REINFORCEMENT SHALL BE MAINTAINED FOR ALL REINFORCEMENT BARS.
  7. APPROX. 10% OVERLAP OF REINFORCEMENT SHALL BE MAINTAINED FOR ALL REINFORCEMENT BARS.
  8. APPROX. 10% OVERLAP OF REINFORCEMENT SHALL BE MAINTAINED FOR ALL REINFORCEMENT BARS.
  9. APPROX. 10% OVERLAP OF REINFORCEMENT SHALL BE MAINTAINED FOR ALL REINFORCEMENT BARS.
  10. APPROX. 10% OVERLAP OF REINFORCEMENT SHALL BE MAINTAINED FOR ALL REINFORCEMENT BARS.



SCHEDULE OF REINFORCEMENT

BAR MARK	BAR SHAPE	BAR DIA (MM)	SPACING (MM)
a1		8	200 C/C
a2		8	200 C/C
a3		8	100 C/C
a4		8	200 C/C
a5		8	4-NOS
a6		8	250 C/C
a7		8	250 C/C
a8		8	250 C/C
a9		8	250 C/C

SCHEDULE OF DIMENSIONS

S.NO	B (mm)	H (mm)	T1 (mm)	T2 (mm)	T3 (mm)	H1 (mm)	H2 (mm)
1	600	600	100	100	100	100	100

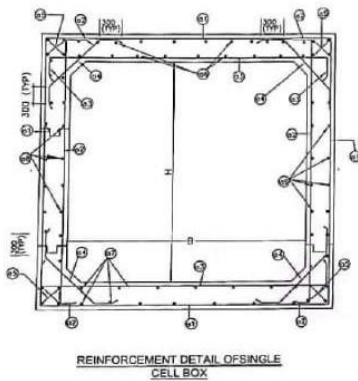
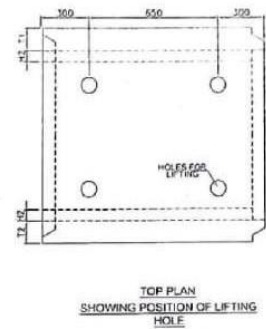
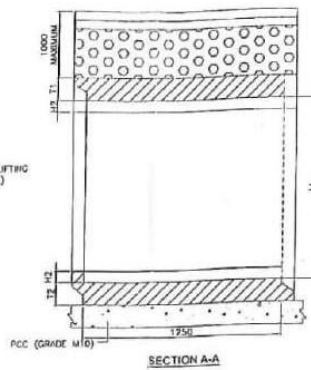
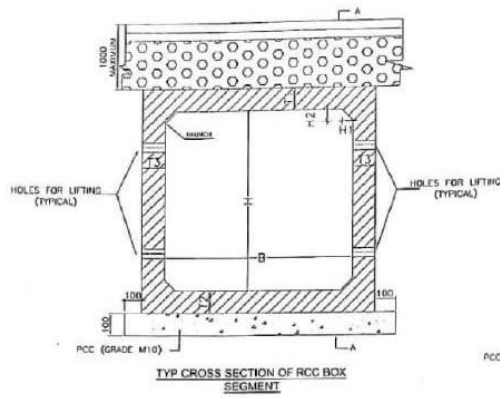


Dr. R. S. JANGID  
Professor  
Department of Civil Engineering  
I.I.T. Bombay, Powai, Mumbai-76

NOTES :-

1. ALL DIMENSIONS ARE IN MILLIMETERS.
2. REINFORCEMENT SHALL BE PLACED IN CONCRETE WITH ALL PROPER SPACING.
3. REINFORCEMENT SHALL BE PLACED IN CONCRETE WITH ALL PROPER SPACING.
4. REINFORCEMENT SHALL BE PLACED IN CONCRETE WITH ALL PROPER SPACING.
5. REINFORCEMENT SHALL BE PLACED IN CONCRETE WITH ALL PROPER SPACING.
6. REINFORCEMENT SHALL BE PLACED IN CONCRETE WITH ALL PROPER SPACING.
7. REINFORCEMENT SHALL BE PLACED IN CONCRETE WITH ALL PROPER SPACING.
8. REINFORCEMENT SHALL BE PLACED IN CONCRETE WITH ALL PROPER SPACING.
9. REINFORCEMENT SHALL BE PLACED IN CONCRETE WITH ALL PROPER SPACING.
10. REINFORCEMENT SHALL BE PLACED IN CONCRETE WITH ALL PROPER SPACING.





SCHEDULE OF REINFORCEMENT

S.NO	BAR MARK	BAR SHAPE	BAR DIA (MM)	SPACING (MM)
1	a1		8	125 C/C
2	a2		8	125 C/C
3	a3		10	125 C/C
4	a4		8	125 C/C
5	a5		8	4-ROS
6	a6		8	250 C/C
7	a7		8	250 C/C
8	a8		8	250 C/C
9	a9		8	250 C/C

SCHEDULE OF DIMENSIONS

S.NO	B (mm)	H (mm)	T1 (mm)	T2 (mm)	T3 (mm)	H1 (mm)	H2 (mm)
1	750	750	100	100	100	100	100

## NOTES

1. ALL DIMENSIONS ARE IN MILLIMETERS.
2. THE REINFORCEMENT SHALL BE AS SHOWN IN THE DRAWING WITH ALL SPECIFIC DETAILS.
3. THE REINFORCEMENT SHALL BE AS SHOWN IN THE DRAWING WITH ALL SPECIFIC DETAILS.
4. THE REINFORCEMENT SHALL BE AS SHOWN IN THE DRAWING WITH ALL SPECIFIC DETAILS.
5. THE REINFORCEMENT SHALL BE AS SHOWN IN THE DRAWING WITH ALL SPECIFIC DETAILS.
6. THE REINFORCEMENT SHALL BE AS SHOWN IN THE DRAWING WITH ALL SPECIFIC DETAILS.
7. THE REINFORCEMENT SHALL BE AS SHOWN IN THE DRAWING WITH ALL SPECIFIC DETAILS.
8. THE REINFORCEMENT SHALL BE AS SHOWN IN THE DRAWING WITH ALL SPECIFIC DETAILS.
9. THE REINFORCEMENT SHALL BE AS SHOWN IN THE DRAWING WITH ALL SPECIFIC DETAILS.



Dr. R. S. JANGID  
Professor  
Department of Civil Engineering  
L.T. Dombay, Powai, Mumbai-76

For any technical issues or doubts arising about the EoI, you can meet with the Assistant Engineer (AE) at BMC Tower in Bhubaneswar.

## **6. GENERAL INFORMATION TO BIDDERS**

### **1. Cost of Document**

The bidder is required to submit document cost along with the proposal amounting to **Rs.4,720/-** (Rupee Four Thousand Seven Hundred Twenty Only) in the form of Demand Draft only drawn from any Scheduled Commercial Bank in India in favor of "**Commissioner, Bhubaneswar Municipal Corporation**" payable at Bhubaneswar.

Any proposal not accompanied by tender document cost shall be summarily rejected.

### **2. Earnest Money Deposit (EMD)**

Not Applicable for this EOI.

### **3. Subletting of Work:**

The Agency/ Supplier shall not assign or sublet the work or any part of it to any other person or party without having first obtained permission in writing from BMC and whereas BMC will be at liberty to refuse if it thinks fit to do so.

### **4. Award of Work**

1. Applicants who fulfill the minimum eligibility criteria as mentioned in Clause 4.1 and 4.2 of the EOI shall submit their detailed proposal as per requirement of this EOI.
2. BMC shall evaluate all proposals and finalise the modalities for the Project in order to issue RFP for a competitive bidding.
3. Based on the Selection criteria of the RFP, BMC shall award the work to the selected bidder.

### **5. Final decision making authority:**

BMC reserves the right to accept or reject any application at any time without assigning any reason thereof and without thereby incurring any liability to the affected applicant or without informing the applicants of the grounds for such action by BMC.

### **6. Arbitration:**

In case of any dispute arising out of or connected with or incidental to this contract. The dispute will be referred to an arbitrator appointed by the Commissioner BMC, Bhubaneswar. The decision of the arbitrator shall be final and binding on both the parties. The arbitration proceedings will be conducted in accordance with the Arbitration and Reconciliation Act, 1996.

### **7. Number of EOIs/ Single Application Eligibility:**

Each applicant is eligible to submit only one application. It is imperative that applicants carefully review and consolidate all relevant information and details into a single, comprehensive application. This policy ensures fairness in the application process, allowing each applicant an



equal opportunity to present their qualifications and proposals. Multiple applications from the same applicant will not be considered, and only the first received application will be evaluated.

#### **8. EOI Submission Date:**

EOI must reach BMC at the specified address, date and time through Speed / Regd. Post / Courier/ hand delivery. If the specified date for the submission of EOI is declared as a holiday for BMC, Bhubaneswar, the EOI will be received up to the scheduled time on the next working day.

#### **9. Late Submission:**

EOI received after the deadline for submission prescribed by BMC will be rejected.

#### **10. Modifications and Withdrawal of EOI:**

No modifications/ withdrawal of the EOI shall be allowed once it is received by BMC, Bhubaneswar.

#### **11. Submission of EOI: Packing, Sealing and Marking of Proposals:**

The bidders shall submit the hard copy of the proposal by way of speed post/ Registered post/ Courier on or before the last date and time of submission of proposal mentioned above.

The proposal should be submitted in two parts viz. "Tender Document Cost", "Technical Bid" in the enclosed proforma. All the two envelopes containing the Tender Document Cost (Envelope 1), Technical documents with all attached annexures (Envelope 2) should be sealed and marked separately and be put together in an outer envelope, which shall be sealed. The outer envelope shall bear given identification: EOI No., Name of Tender, Deadline for submission (Bid due date), Name and address of the bidder.

Send the bid document-

To,  
Superintend Engineer,  
LG Floor, BMC ICOMC Tower,  
Satya Nagar, Janpath,  
Unit-9, Bhubaneswar- 751007

If the envelopes are not sealed and marked as instructed above, BMC assumes no responsibility for the misplace or premature opening of the contents of the Bid and consequent losses, if any, suffered by the Bidder.

#### **12. Jurisdiction**

All disputes arising shall be subject to the jurisdiction of the appropriate court at Bhubaneswar, India and will be governed by the laws of India.

## ANNEXURE- I

### Letter of Application.

(To be submitted and signed by the Bidder's authorized signatory)

**To**  
**The Superintend Engineer,**  
**Bhubaneswar Municipal Corporation,**  
**Bhubaneswar.**

**Subject:** Expression Of Interest For Deriving rates towards supply of SFRC Drain cover and Box drain of Dimensions standardized as per specifications within the limits of Bhubaneswar Municipal Corporation

Dear Sir/Madam,

1. Being duly authorized to represent and act for and on behalf of (here in the applicant), and having studied and fully understood all the information provided in the bid document, the undersigned hereby apply as a bidder.
2. Our Proposals are as per the requisite formats along with the supporting documents, duly filled are submitted as specified.
3. Bhubaneswar Municipal Corporation and its authorized representatives are hereby authorized to conduct any inquiries / investigation to verify the statements, documents and information submitted in connection with the application and to seek clarification from our banker regarding any financial and technical aspects. This letter of application will also serve as authorization to any individual or authorized representative of any institution referred to the supporting information, to provide such information deemed necessary as requested by yourselves to verify statements and information provided in the application or with regard to the resources, experience and competence of the applicant.
4. This application is made with full understanding that:
  - (a) Bhubaneswar Municipal Corporation, Bhubaneswar reserves the right to reject or accept any Bid/Proposal, cancel the bidding process, and/or reject all Bids.
  - (b) Bhubaneswar Municipal Corporation, Bhubaneswar shall not be liable for any of the above actions and shall be under no obligation to inform the applicant of the same.
5. We, the undersigned declare the statements made and the information provided in the duly completed application forms uploaded, as complete, true and correct in every detail.
6. We hereby confirm that we have read, understood and accepted all the detailed terms and conditions of this EOI Document and Project related Information as required for the Proposal. We have also visited the site/roads and areas for the assessment and have made our own due diligence and assessment regarding the Project.

Authorized signatory  
Name and seal of Bidder

Date:  
Place

## Annexure II

### Information of Applicants

Name of the Agency (In full): .....

Address: .....

Contact person Name and Number: .....

E-mail address: .....

Name & Contact Details of Authorized Person: .....

Year of establishment: .....

*(Enclose Certificate of Registration/Incorporation under relevant Acts)*

Place of business: .....

GST and PAN Details: .....

Details of Document Fee: .....

*(DD no. & Bank Name)*

**(Signature of Authorized Person with seal of applicant)**

Date:

Place:

### Annexure III

#### AVERAGE ANNUAL TURNOVER STATEMENT

The Average Annual Turnover statement of .....<name of the organization>, at .....<address of the organization >, for the last three financial year are given below and certified that the statement is true and correct.

Sl. No.	Financial Year	Turnover in lakhs (₹)
1	2020-21	
2	2022-22	
3	2022-23	
	Average annual turnover statement	

Date:

Signature of Chartered Accountants

Place:

Seal:

## Annexure IV

### Experience

Sl. No.	Name of Project	Year of Project	Project cost
1			
2			
3			
4			
5			

### Detailed Project Experience

Project Information	
Name of the project	
Client Name	
Name and contact details of the client	
Description of the project	
Scope of services	
Start date	
Completion date	
Duration of the project	
Other Relevant Information (if any)	

Please check (✓) on the supporting documents enclosed:

- Work Order received from Client
- Agreement signed between Bidder and Client
- Client Certificate/ others (if any)

Date:

Signature of Chartered Accountants

Place:

Seal:

## Annexure V

### NON – BLACKLIST

We, .....<name of the Organization>, having our registered office at ..... , <HQ address of the Organization> hereby declare that we are submitting this proposal in reference to the Expression of Interest for Annual Rate Contract for Hiring of Various Vehicles & Machineries on Hourly Basis for work Under Bhubaneswar Municipal Corporation

We declare that we have not been blacklisted by any Ministry / Department / industry Public Sector Undertaking or any other agency of the Central/State Government.

We declare that there are no proceedings, disputes or enquiries pending against us in connection with cheating, misappropriation of funds or exploitation of beneficiary.

We also acknowledge that in case of misrepresentation of the information, our proposal / contract shall be rejected / terminated at any stage by the client, which shall be binding on us. Any loss or damage to the client, on this count will be compensated by us.

Date:

Authorized Signature

Place:

Name and Title of Signatory

Seal:

## Annexure VI

### BOQ for Precast Drain Sections (on Bidders Letter head)

SI no	Description	Unit	Rate Rs.
1.	Providing of reinforced Ferro-Cement drain covers designed for 'A' class loading duly marked on cover with adequate steel reinforcement having thickness 75mm to 150mm anti corrosive bitumen painted M.S. plate, Rim and M.S. lifting hooks, Admixtures like plasticizer, bond improving compound, shrinkage, resistance compound, abrasion resistant complete as per approved design etc.		
a	Standard Size 600x800mm (75mm thick) for span 300 to 450mm	sqm	
b	Standard Size 1000x800mm (100mm thick) for span 451 to 700mm	sqm	
c	Standard Size 1500x600mm (125mm thick) for span 701 to 1200mm	sqm	
d	Standard Size 2100x500mm (150mm thick) for span 1201 to 1500mm	sqm	
2.	Providing of reinforced Ferro-Cement drain covers designed for 'AA' class loading duly marked on cover with adequate steel reinforcement having thickness 75mm to 150mm anti corrosive bitumen painted M.S. plate, Rim and M.S. lifting hooks, Admixtures like plasticizer, bond improving compound, shrinkage, resistance compound, abrasion resistant complete as per approved design etc.		
a	Standard Size 600x800mm (75mm thick) for span 300 to 450mm	sqm	
b	Standard Size 1000x800mm (100mm thick) for span 451 to 700mm	sqm	
c	Standard Size 1500x600mm (125mm thick) for span 701 to 1200mm	sqm	
d	Standard Size 2100x500mm (150mm thick) for span 1201 to 1500mm	sqm	
3.			
4.	Providing Precast reinforced cement concrete Box culvert section of M-40 grade designed for 'AA' class loading as per IRC specifications including the effect of impact, EQ etc. complete on firm base of 200mm thick lean concrete of M-10 grade with aggregate of size 40mm nominal of following internal sizes. The work includes cost of design of RCC Precast Box and its proof checking from IIT/NIT etc. complete in all respect as per specifications		
a	Size 0.60 M x 0.60 M (100 mm thick)	meter	
b	Size 0.75 M x 0.75 M (100 mm thick)	meter	
c	Size 1 M x 1 M (150 mm thick)	meter	
d	Size 1.50 M x 1.50 M (190 mm thick)	meter	
e	Size 2.00 M x 2.00 M (240 mm thick)	meter	
5.	Providing Precast reinforced cement concrete U-Drain Section of M-40 grade with SFRC Cover Slab designed for 'A' class loading as per Codal specifications including the effect of impact, EQ etc. complete on firm base of 200mm thick lean concrete of M-10 grade with aggregate of size 40mm nominal of following internal sizes. The work includes cost of design of RCC Precast Box and its proof checking ,complete in all respect as per specifications		
a	Size 0.60 M x 0.60 M (150 mm thick)	meter	

b	Size 0.75 M x 0.75 M (150 mm thick)	meter	
c	Size 1 M x 1 M (150 mm thick)	meter	
d	Size 1.50 M x 1.50 M (180 mm thick)	meter	

Date:

Authorized Signature

Place:

Name and Title of Signatory