

SANCTION TEXT

APPROVING AUTHORITY DIGITAL SIGNATURE

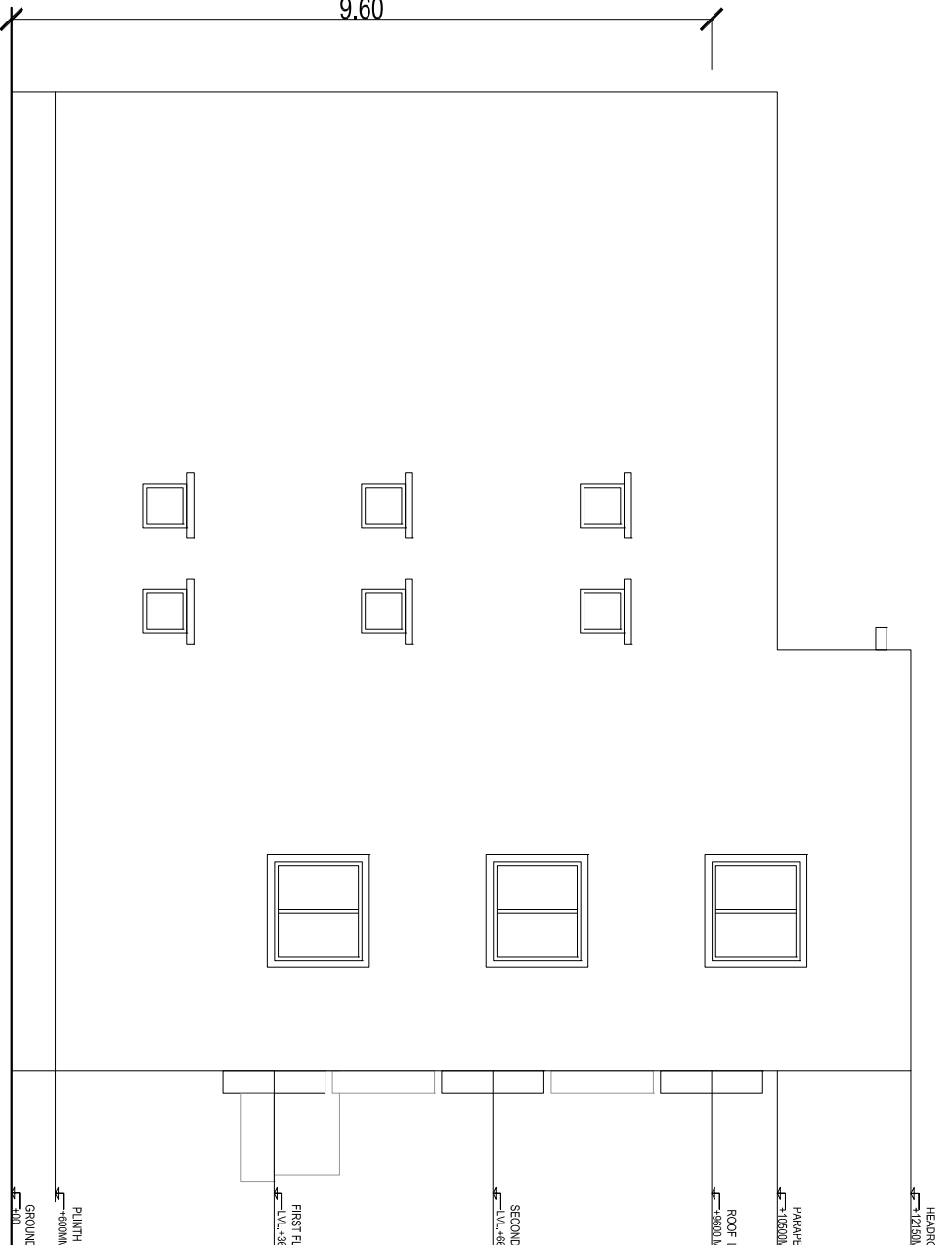
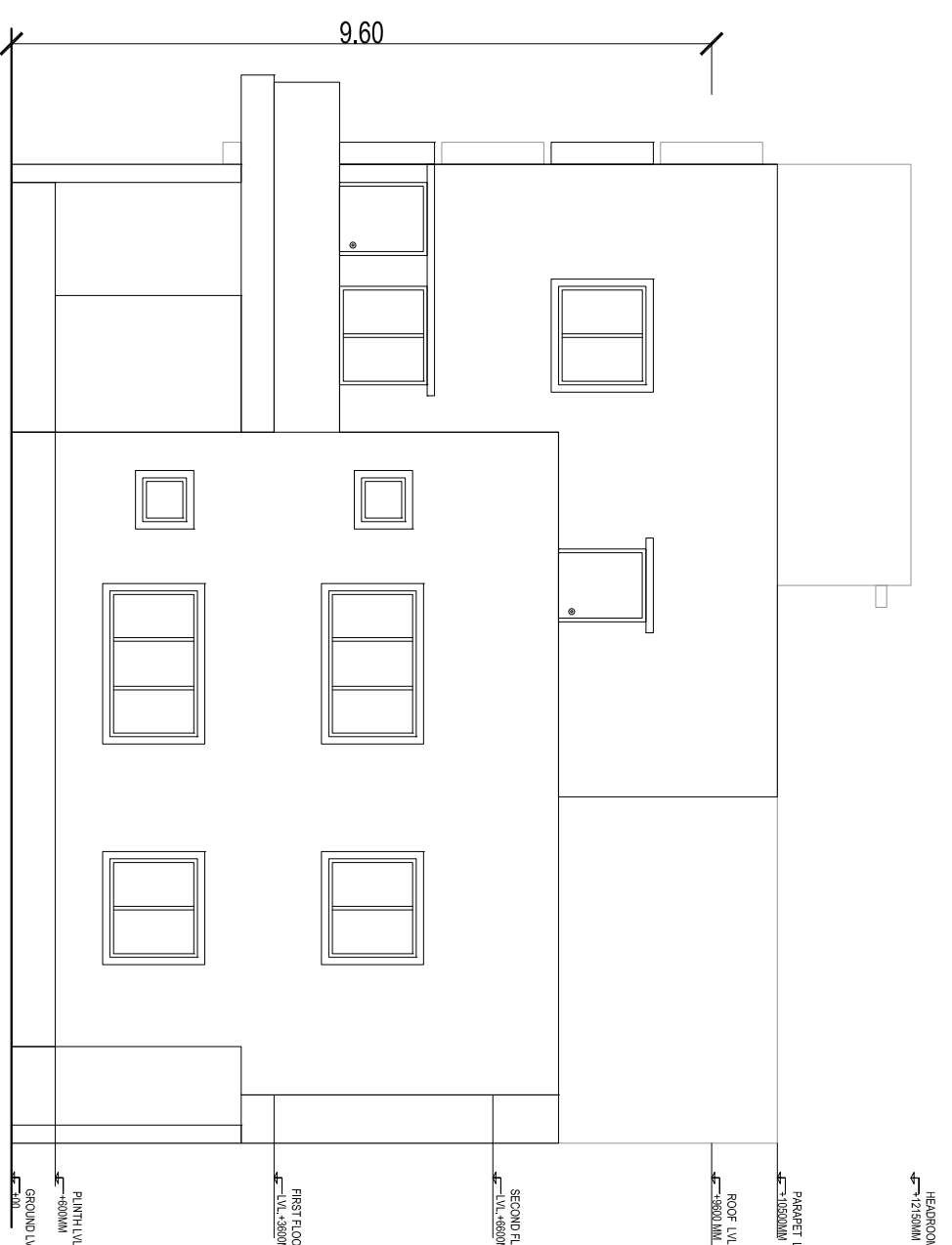
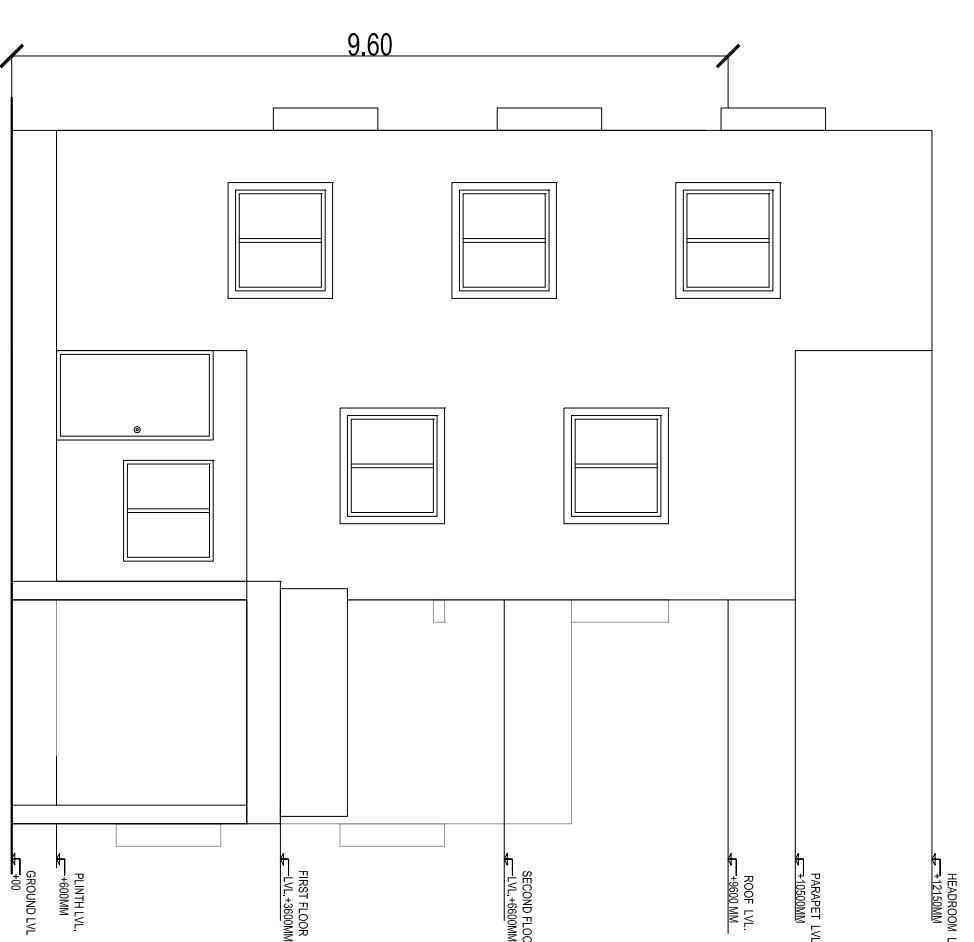
DOOR & WINDOW SCHEDULE			
S/L NO.	TYPE	SIZE	DESCRIPTION
1	D	1.20 X 2.10	PANELLED DOOR
2	D1	1.00 X 2.10	PANELLED DOOR
3	D2	0.90 X 2.10	PANELLED DOOR
4	W	1.95 X 1.20	MS. GLAZED WINDOW
5	W1	2.00 X 1.20	MS. GLAZED WINDOW
6	V	0.60 X 0.60	MS. GLAZED VENTILATOR

AREA AND BUILDING PARAMETERS	
PLOT DIMENSIONS (IN FEET)	40' X 60'
PLOT DIMENSIONS (IN MT)	12.19M X 18.28M
PLOT AREA	222.83 SQMT
GROUND FLOOR BUILT UP AREA	117.93 SQMT
FIRST FLOOR BUILT UP AREA	104.30 SQMT
SECOND FLOOR BUILT UP AREA	74.29 SQMT
TOTAL BUILT UP AREA	296.52 SQMT
FLOOR AREA RATIO (FAR)	1.33
BUILDING HEIGHT	9.60 MT
PLANTATION AREA	0 SQMT
NUMBER OF TREES PROVIDED	2 NOS.

APPLICANT DETAILS	
NAME OF APPLICANT	
ADDRESS	
CONTACT NUMBER	

LAND DETAILS	
REVENUE VILLAGE	
REVENUE PLOT NO	
SCHEME PLOT NO/ LAYOUT	
PLOT NO/ SUB PLOT NO	
KHATA NUMBER	

SITE PLAN	
DRAWING TITLE	PROPOSED G+2 STORED RESIDENTIAL HOUSE
THIS IS A STANDARDIZED PRE-APPROVED PLAN PROVIDED BY	

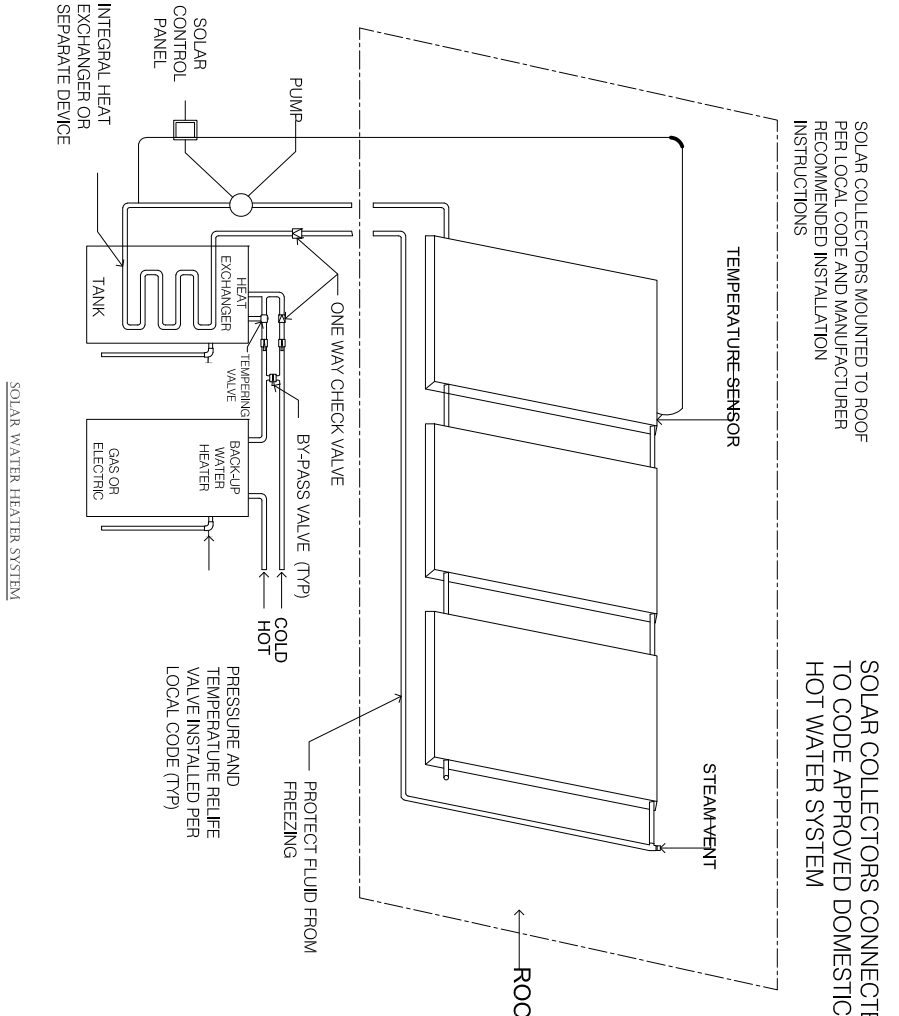


FRONT ELEVATION

RIGHT SIDE ELEVATION

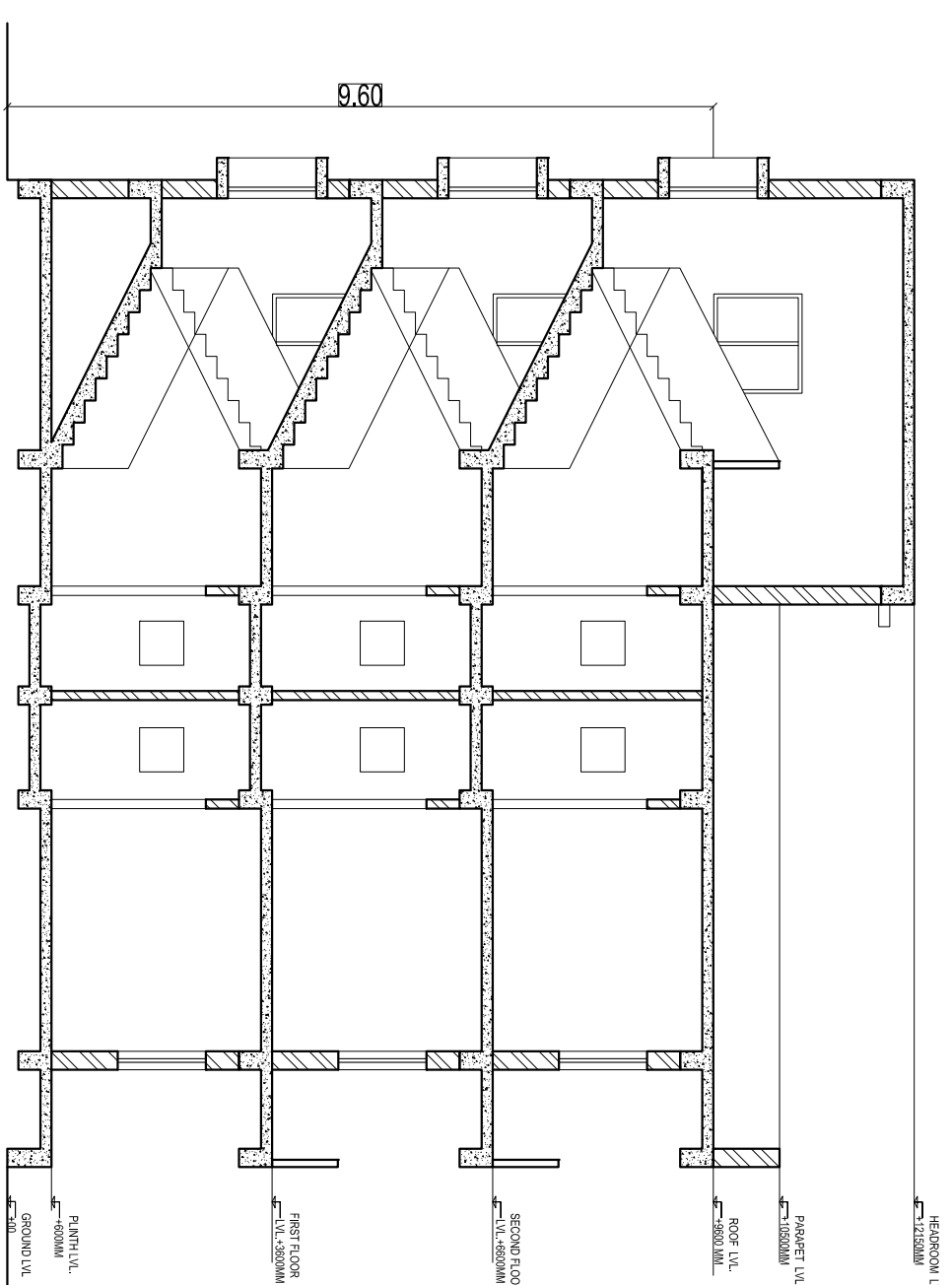
REAR ELEVATION

LEFT SIDE ELEVATION

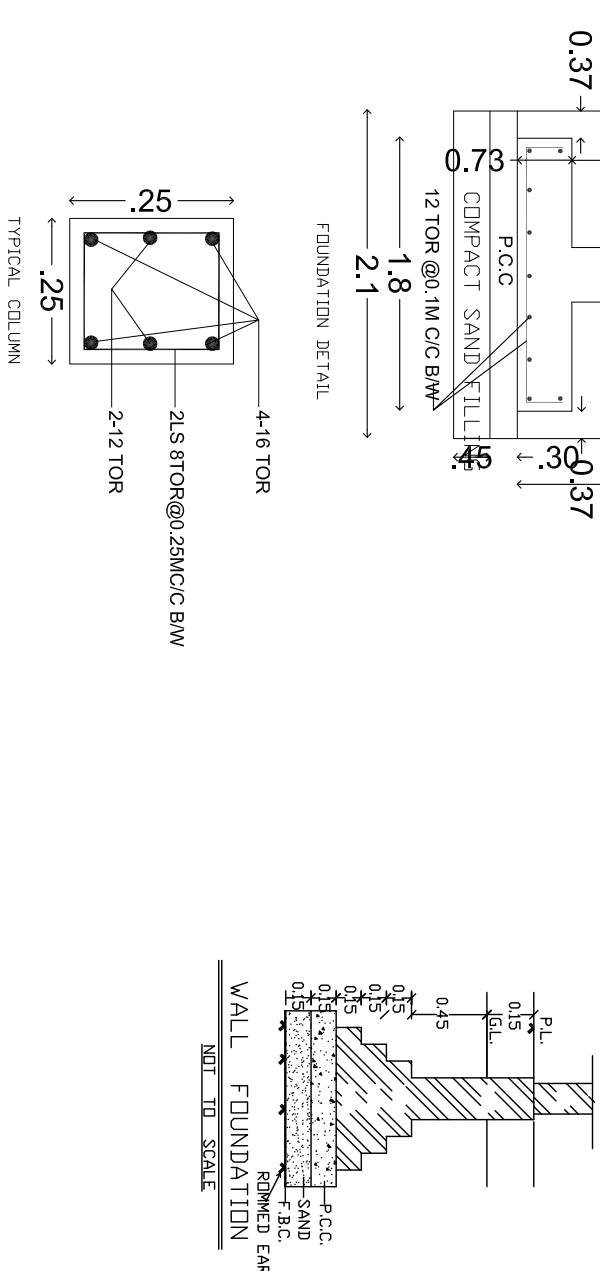


SOLAR COLLECTORS MOUNTED TO ROOF PER LOCAL CODE AND MANUFACTURER'S INSTRUCTIONS

SOLAR COLLECTORS CONNECTED TO CODE APPROVED DOMESTIC HOT WATER SYSTEM



SECTION AA



TYPICAL COLUMN

2.12 TOR

2.15 TOR @ 25MCC BW

4.18 TOR

2.15 TOR @ 25MCC BW

4.18 TOR

2.12 TOR

2.15 TOR @ 25MCC BW

4.18 TOR

2.15 TOR @ 25MCC BW

4.18 TOR

2.12 TOR

2.15 TOR @ 25MCC BW

4.18 TOR

2.15 TOR @ 25MCC BW

4.18 TOR

2.12 TOR

2.15 TOR @ 25MCC BW

4.18 TOR

2.15 TOR @ 25MCC BW

4.18 TOR

2.12 TOR

2.15 TOR @ 25MCC BW

4.18 TOR

2.15 TOR @ 25MCC BW

4.18 TOR

2.12 TOR

2.15 TOR @ 25MCC BW

4.18 TOR

2.15 TOR @ 25MCC BW

4.18 TOR

2.12 TOR

2.15 TOR @ 25MCC BW

4.18 TOR

2.15 TOR @ 25MCC BW

4.18 TOR

2.12 TOR

2.15 TOR @ 25MCC BW

4.18 TOR

2.15 TOR @ 25MCC BW

4.18 TOR

2.12 TOR

2.15 TOR @ 25MCC BW

4.18 TOR

2.15 TOR @ 25MCC BW

4.18 TOR

2.12 TOR

2.15 TOR @ 25MCC BW

4.18 TOR

2.15 TOR @ 25MCC BW

4.18 TOR

2.12 TOR

2.15 TOR @ 25MCC BW

4.18 TOR

2.15 TOR @ 25MCC BW

4.18 TOR

2.12 TOR

2.15 TOR @ 25MCC BW

4.18 TOR

2.15 TOR @ 25MCC BW

4.18 TOR

2.12 TOR

2.15 TOR @ 25MCC BW

4.18 TOR

2.15 TOR @ 25MCC BW

4.18 TOR

2.12 TOR

2.15 TOR @ 25MCC BW

4.18 TOR

2.15 TOR @ 25MCC BW

4.18 TOR

2.12 TOR

2.15 TOR @ 25MCC BW

4.18 TOR

2.15 TOR @ 25MCC BW

4.18 TOR

2.12 TOR

2.15 TOR @ 25MCC BW

4.18 TOR

2.15 TOR @ 25MCC BW

4.18 TOR

2.12 TOR

2.15 TOR @ 25MCC BW

4.18 TOR

2.15 TOR @ 25MCC BW

4.18 TOR

2.12 TOR

2.15 TOR @ 25MCC BW

4.18 TOR

2.15 TOR @ 25MCC BW

4.18 TOR

2.12 TOR

2.15 TOR @ 25MCC BW

4.18 TOR

2.15 TOR @ 25MCC BW

4.18 TOR

2.12 TOR

2.15 TOR @ 25MCC BW

4.18 TOR

2.15 TOR @ 25MCC BW

4.18 TOR

2.12 TOR

2.15 TOR @ 25MCC BW

4.18 TOR

2.15 TOR @ 25MCC BW

4.18 TOR

2.12 TOR

2.15 TOR @ 25MCC BW

4.18 TOR

2.15 TOR @ 25MCC BW

4.18 TOR

2.12 TOR

2.15 TOR @ 25MCC BW

4.18 TOR

2.15 TOR @ 25MCC BW

4.18 TOR

2.12 TOR

2.15 TOR @ 25MCC BW

4.18 TOR

2.15 TOR @ 25MCC BW

4.18 TOR

2.12 TOR

2.15 TOR @ 25MCC BW

4.18 TOR

2.15 TOR @ 25MCC BW

4.18 TOR

2.12 TOR

2.15 TOR @ 25MCC BW

4.18 TOR

2.15 TOR @ 25MCC BW

4.18 TOR

2.12 TOR

2.15 TOR @ 25MCC BW

4.18 TOR

2.15 TOR @ 25MCC BW

4.18 TOR

2.12 TOR

2.15 TOR @ 25MCC BW

4.18 TOR

2.15 TOR @ 25MCC BW

4.18 TOR

2.12 TOR

2.15 TOR @ 25MCC BW

4.18 TOR

2.15 TOR @ 25MCC BW

4.18 TOR

2.12 TOR

2.15 TOR @ 25MCC BW

4.18 TOR

2.15 TOR @ 25MCC BW

4.18 TOR

2.12 TOR

2.15 TOR @ 25MCC BW

4.18 TOR

2.15 TOR @ 25MCC BW

4.18 TOR

2.12 TOR

2.15 TOR @ 25MCC BW

4.18 TOR

2.15 TOR @ 25MCC BW

4.18 TOR

2.12 TOR

2.15 TOR @ 25MCC BW

4.18 TOR

2.15 TOR @ 25MCC BW

4.18 TOR

2.12 TOR

2.15 TOR @ 25MCC BW

4.18 TOR

2.15 TOR @ 25MCC BW

4.18 TOR

2.12 TOR

2.15 TOR @ 25MCC BW

4.18 TOR

2.15 TOR @ 25MCC BW

4.18 TOR

2.12 TOR

2.15 TOR @ 25MCC BW

4.18 TOR

2.15 TOR @ 25MCC BW

4.18 TOR

2.12 TOR

2.15 TOR @ 25MCC BW

4.18 TOR

2.15 TOR @ 25MCC BW

4.18 TOR

2.12 TOR

2.15 TOR @ 25MCC BW

4.18 TOR

2.15 TOR @ 25MCC BW

4.18 TOR

2.12 TOR

2.15 TOR @ 25MCC BW

4.18 TOR

2.15 TOR @ 25MCC BW

4.18 TOR

2.12 TOR

2.15 TOR @ 25MCC BW

4.18 TOR

2.15 TOR @ 25MCC BW

4.18 TOR

2.12 TOR

2.15 TOR @ 25MCC BW

4.18 TOR

2.15 TOR @ 25MCC BW

4.18 TOR

2.12 TOR

2.15 TOR @ 25MCC BW

4.18 TOR

2.15 TOR @ 25MCC BW

4.18 TOR

2.12 TOR

2.15 TOR @ 25MCC BW

4.18 TOR

2.15 TOR @ 25MCC BW

4.18 TOR

2.12 TOR

2.15 TOR @ 25MCC BW

4.18 TOR

2.15 TOR @ 25MCC BW

4.18 TOR

2.12 TOR

2.15 TOR @ 25MCC BW

4.18 TOR

2.15 TOR @ 25MCC BW

4.18 TOR

2.12 TOR

2.15 TOR @ 25MCC BW

4.18 TOR